

Fund Match Offered For Child Clinic

The Hartford Foundation for Public Giving has voted a \$15,000 challenge grant to Manchester's Community Child Guidance Clinic if the agency raises an equal amount in donations toward its building fund.

The clinic is seeking funds to build a 3,200 square foot addition to the rear of its present facility, a 145-year-old wooden frame house at 317 N. Main St.

The new addition, fully equipped and including a 5,600 square foot parking area, is expected to cost approximately \$75,000. The Foundation's challenge grant with matching local funds would provide the agency with enough resources to begin construction.

Richard D. Cochran of Vernon, president of the clinic's board of directors, says the board has accepted the foundation's challenge and will launch a drive next month to seek matching funds from area citizens. The United Fund has given its approval for the clinic, a member agency, to conduct a public appeal.

The challenge grant was announced today by the Foundation's distribution committee chairman, Lucian E. Baldwin.

This is the second major grant to an agency in Greater Manchester since 1971, when the Hartford Foundation expanded its area to include Manchester, Bolton, and Vernon-Rockville. In January of 1971 the Foundation awarded \$30,000 to Manchester Memorial Hospital for its new emergency room.

The 13-year-old Child Guidance Clinic, a private, non-profit mental health agency, offers prevention, treatment and guidance to families where one or more children are experiencing emotional and adjustment problems. Although it is not a free clinic, patients' fees cover only 10 per cent of the clinic's operating costs. The clinic is financed primarily by the State Department of Mental Health and grants from the eleven towns served by the clinic. But all of these funds are for operational expenses, not for the building addition.

Since it was established, the clinic's caseload has increased at least seven-fold with nearly 500 individual families served directly last year alone. Most youngsters are referred to the clinic by school authorities and physicians although parents may make direct application to the clinic. Over half of the cases have come from the Vernon, South Windsor, Tolland, and Ellington areas and 40 per cent from Manchester.

The new addition will not only relieve present congestion, but will allow the agency to hold even more community service group meetings, expand services, and undertake special requests from area health and education institutions which to date have had to be deferred because of cramped quarters.

500 Families On Caseload

The jury on Sunday found Berrigan guilty of smuggling a letter out of a federal prison. It reported being deadlocked on nine other counts but was ordered by the judge to resume deliberations today because of what he said was the importance and cost of the 11-week trial. He said he would dismiss the jury only if it became "hopelessly deadlocked."

The defense objected strenuously to what they called "prejudicial" in the manner in which the jury's latest request came.



Rev. Philip Berrigan

Berrigan Jury Still Undecided

HARRISBURG, Pa. (AP) — The Harrisburg Seven conspiracy jury asked again today that the judge reread his instructions on the law and give them more testimony of the government's key witness against antiwar priest Philip Berrigan and six other peace activists.

U.S. District Court Judge R. Dixon Herman said he would not read his two-hour charge nor provide transcripts of the testimony of paid FBI informer Boyd R. Douglas Jr. But Herman said he would "be happy to read any specific portions" of either his charge or the transcripts.

The jury on Sunday found Berrigan guilty of smuggling a letter out of a federal prison. It reported being deadlocked on nine other counts but was ordered by the judge to resume deliberations today because of what he said was the importance and cost of the 11-week trial. He said he would dismiss the jury only if it became "hopelessly deadlocked."

The defense objected strenuously to what they called "prejudicial" in the manner in which the jury's latest request came.



Proud and Pretty

Tammy McGee, 7, of Manchester, shows off her Easter finery to the Rev. Ronald Haldemann of St. Mary's Episcopal Church. (Herald photo by Bucevicius)

I-84 Hearing Still On Despite Petition By Foes

The Connecticut Department of Transportation (DOT) plans to go ahead with its scheduled public hearing tomorrow night on a recommended 12.6-mile corridor of Interstate 84 from Bolton Notch to Columbia, despite a formal petition by I-84 opponents for a delay.

The hearing will be held at 8 p.m. tomorrow at the Coventry High School on Ripley Hill Rd., Coventry. The section of the I-84 corridor to be discussed starts near the Manchester-Bolton line (where the recently opened Manchester segment of I-84 ends) and goes to the vicinity of the Coventry-Columbia town line (where another I-84 segment is already under construction).

The formal petition, submitted to the DOT by the Connecticut Citizens Action Group (CCAG) and two other environmental organizations, asks that the hearing be postponed due to "certain fundamental legal defects inherent in the hearing agenda and in the scope of the hearing."

The DOT received the petition today, a spokesman said, and it will be reviewed. However, the state is still planning to hold the

hearing as scheduled, according to the spokesman.

The petition was submitted and signed by the CCAG, Ralph Nader's public interest research and lobbying organization in Connecticut; the Mansfield Environmental Protection Association of Mansfield; and Stop I-

84, Inc., of Hope, R. I., a group claiming to represent 20,000 concerned residents of Rhode Island and Connecticut.

The Mansfield association has initiated an "I-84 Coalition" in an effort to stop completion of I-84 from Hartford to Providence. Other groups in the coalition are Residents for Responsible Planning, Coventry; Connecticut Committees of Correspondence, Inc.; and Ecology Action of Hampton.

The formal petition submitted to the DOT claims that "neither the hearing agenda nor the environmental impact statement covers a sufficient length of the proposed I-84 to allow effective citizen participation in the process of determining the need for the proposed road."

The petition also claims that the hearing doesn't allow for possible alternatives to the proposed route.

The DOT's announcement of the recommended corridor in late February was accompanied by release of a 120-page "Draft Environmental Impact Statement," prepared by consultants

Tomorrow At 8 p.m.

(See Page Eight)

Mighty Jet Force Ready for Enemy

BULLETIN

WASHINGTON (AP) — President Nixon summoned a special foreign policy panel into session today to analyze and prepare options for possible action to cope with the current Communist thrust into South Vietnam.

But a White House spokesman said the Communist push south of the demilitarized zone will not hamper continuing scheduled withdrawal of U.S. troops from Indochina.

"Our withdrawal program is on schedule and will be met," deputy press secretary Gerald L. Warren said in response to a question.

SAIGON (AP) — The United States recalled two aircraft carriers to the Tonkin Gulf today to reinforce a massive air strike force preparing to hit back at an enemy offensive in South Vietnam's northernmost province.

When the weather clears we're going to sock it to them," said one senior pilot.

The carrier Kitty Hawk arrived in waters off Vietnam today and the Constellation was steaming in from Japan to join the Coral Sea and the Hancock. The four carriers and their some 275 warplanes, combined with 250 Air Force jets at bases in South Vietnam and Thailand, will form the biggest U.S. attack force since the 1968 bombing halt.

The U.S. Command strongly indicated massive air strikes are planned—against North Vietnam to retaliate for the enemy offensive across the demilitarized zone and against enemy troops and materiel already engaged south of the zone.

U.S. pilots said targets inside North Vietnam would include long-range artillery guns bombarding South Vietnamese positions across the DMZ and a re-

serve infantry division poised just north of the zone.

Other key targets will include tanks, self-propelled artillery pieces and other heavy equipment that North Vietnam is using more than ever before in the Indochina war.

Forecasters said they did not expect fully clear skies until Tuesday or Wednesday. But the U.S. Command set the stage for the massive retaliatory attack with a statement that the North Vietnamese attack across the demilitarized zone threatened U.S. forces still in Vietnam, and the command was utilizing its "remaining air and gunfire assets as appropriate to protect our diminishing forces."

The North Vietnamese ground attack slowed down today, but the Communists pushed more heavy weapons across the demilitarized zone and U.S. fighter-bombers and destroyers pounded a column of 50 North Vietnamese tanks below the DMZ.

The invading North Vietnamese pushed 10 miles below the DMZ over the weekend, driving the South Vietnamese from two more bases and shooting down three U.S. helicopters and a small spotter plane. Eight American helicopter crewmen were missing and believed dead.

Other Communist forces attacked Fire Base Anne, eight miles west of Quang Tri City, overran an artillery base on the Cambodian border, Fire Base Pace, and kept up artillery attacks in the central highlands.

Official field reports said 50 enemy tanks accompanied by infantrymen were sighted at a road junction a mile and a half north of Dong Ha. U.S. Navy destroyers offshore and warplanes began attacking them, but results were not immediately known.

The same reports said that self-propelled guns were observed crossing the southern border of the DMZ.

The North Vietnamese also were reported moving anti-aircraft missile launchers to the frontier to attack American and South Vietnamese planes below the DMZ.

A break in the heavy cloud cover allowed U.S. jets to make 128 strikes against enemy gun and troop positions below the buffer zone, the heaviest raids in South Vietnam since Feb. 15. American jets also streaked into North Vietnam to blast anti-aircraft missile sites five miles above the demilitarized zone, but it was not known what they hit.

The biggest Communist push since the 1968 Tet offensive is now in its fifth day. The South Vietnamese have retreated 10 miles back from the DMZ and abandoned a dozen bases. At least 5,000 South Vietnamese

(See Page Ten)

SEC Files Show ITT Paid Tax

WASHINGTON (AP)—Financial statements on file at the Securities and Exchange Commission contradicted today Sen. George McGovern's charge that International Telephone and Telegraph Corp. paid no federal income taxes for the past three years.

McGovern leveled the latest charge against the giant conglomerate, storm center of Senate hearings on President Nixon's nomination of Richard Kleindienst as attorney general, on the radio and television CBS show, "Face the Nation" on an otherwise quiet Sunday before the Wisconsin presidential primary.

The South Dakota Democrat said documents on file with the SEC and used by members of the Senate Judiciary Committee in questioning ITT President Harold Geneen last Wednesday indicated the corporation paid no federal income tax for 1968, 1969 and 1970.

He also charged the corporation listed a controversial \$400,000 contribution to the Republican National Convention as a business expense. He later retracted that charge.

An ITT spokesman in New York said that in 1971 the corporation paid more than \$207 million in income taxes of which about one-third were U.S. income taxes. He also said the company paid more than \$195 million in 1970 of which about 28 per cent went for U.S. federal income taxes. He listed \$174 million as the combined tax for 1969, and more than \$146 million as the figure for 1968.

Dollar Formally Devalued

WASHINGTON (AP) — President Nixon made the devaluation of the dollar official today, signing legislation raising the value of gold from \$35 to \$38 an ounce.

This change in the gold content of the dollar, the first since 1934, amounts to an 8.57 per cent increase in gold value, or

a 7.89 per cent dollar devaluation.

Actually, the change will not officially take effect until Secretary of the Treasury John B. Connally notifies officials of the International Monetary Fund.

Paul A. Volcker, under-secretary of the Treasury for monetary affairs, told reporters he did not know when Connally would formally notify the IMF.

Calm at the Beach

Spring Blast Muffled

By THE ASSOCIATED PRESS
MIAMI—Beaches from Daytona Beach to Nassau have blossomed with bikinis, ball games and boys and girls looking for a good time and each other. The annual rites of spring, spawned by the southward migration of hundreds of thousands of college students fleeing their campuses, is reaching its peak.

But in marked contrast to other years when the beaches were transformed into wall-to-wall bronzed backs, this year's sun worshipers were by and large orderly, law-abiding and even lethargic.

Police in Daytona Beach, jammed with upwards of 200,000 students, said Sunday that arrests have been kept to a minimum and most involve misdemeanors such as illegal consumption of alcohol, public intoxication, and profanity. There have been a few arrests for possession of marijuana, but the biggest headache law enforcement officials have encountered has been the parking problem, said Ray Hutton,

chief of the Division of Beach Safety.

Car bearing license plates from dozens of states fought each other for space along Daytona's world-famous 10 miles of glistening white sands.

In Fort Lauderdale, where the beach boom was born about 15 years ago, authorities complained most about hitchhiking, which violates a city ordinance.

Orderly, Lethargic

Other offenses committed by the approximately 20,000 migrants included panhandling, sleeping on the beach, and stealing food from grocery stores.

Washing hair and brushing teeth under the many open-air beach showers provided by the city was legal, and long lines formed at these.

In Nassau, where hotel rooms went for at least \$40 a day per

person double occupancy, innkeepers reported they were booked solid.

The wardrobe was the same among the beaming beachgoers—skimpy swim suits, sweatshirts emblazoned with school names of fraternity and sorority affiliations, cut-off jeans, sandals or tennis shoes or bare feet, and lots of peace-symbol jewelry.

Faint odors of beer, suntan oil, and pizza wafted for miles on soft sea breezes as blaring rock music reverberated from musicians blasting out the beat atop flatbed trucks parked alongside palm trees.

In California, law enforcement officials and lifeguards wondered what happened to the Easter Week beach bunnies. Fewer young persons and less trouble were reported at the resorts than in previous years.

"I don't understand it," said Police Sgt. Keith Duell in Santa Cruz, a popular coastal resort. "It seems like the kids have all gone somewhere else this year. Do you have any reports of where they went?"



(Herald photo by Bucevicius)

Beauties Reach for Town Crown

Contestants for Miss Manchester title rock and roll dance across parking area at the Parkade Saturday on trail of coveted crown.

3
A
P
R

3

LIGGETT DRUG PARKADE
OPEN 8:00 A.M. TO 10 P.M.

Tiger Cubs Born
 INDIANAPOLIS (AP) — Two Siberian tigers were born at the Indianapolis Zoo on Sunday. The two cubs were the first litter for the nearly 3-year-old mother. The father will be 2 years old April 15.

Happiness Is —
A REALLY CLEAN LAUNDROMAT
TUESDAY AND WEDNESDAY SPECIAL
8 Lbs. DRY CLEANING — \$1.50
Quality Speed Queen Equipment
BELCON LAUNDROMAT — 309 Green Rd.

BITUMINOUS DRIVEWAYS
 Parking Areas & Gas Stations & Basketball Courts
Early Bird Special
10% DISCOUNT UNTIL APRIL 15th
 All Work Personally Supervised. We are 100% Insured
DeMAIO BROTHERS SINCE 1920
 CALL 688-7881

You can walk away with savings on Scotts famous Turf Builder

(Just by buying now, before April 11)

All you do is purchase your TURF BUILDER, Scotts lawn food, right now, during Scotts Pre-Spring Sale. You save up to \$2 a bag. TURF BUILDER is America's favorite lawn fertilizer. Makes grass grow greener, thicker, sturdier. A terrific bargain at these sale prices.

Scotts Pre-Spring Sale
 Save \$2 15,000 sq ft (58 1/2 lbs) 13.95 11.95
 Save \$1 10,000 sq ft (39 lbs) 9.95 8.95
 Save 25¢ 5,000 sq ft (19 1/2 lbs) 5.45 5.20

BLISH HARDWARE CO.
 "The Town's Leading Hardware Store"
 798 Main Street in Downtown Manchester

Caldor SERVICE CENTER

EARLY WEEK SERVICE SPECIALS!
 Call for Your Appointment NOW!
 Monday thru Wednesday

Double Action Standard Shock Absorbers
4 for \$24 includes labor

Equal to original equipment for most cars. Restores new car ride, reduces vibration, sway and wheel bounce. Reg. \$ 5.99 each

Complete 5 Point Engine Tune-Up
13.88 includes labor

8 Cylinder Cars 16.88
 Here is what we do:
 Check distributor and spark plug wires
 Install new Champion 242 plugs
 Install new points, rotor, condenser
 Time and oil level by gauge setting, adjust carburetor

Wheel Balance & Rotation Special
5.88 includes labor

Balance all wheels, oil, car, rotate tires, retorque spacers and replace with your regular tires. Includes weights.

Quaker State Oil Change With Lube and Oil Filter
5.88 including labor

We install up to 5 qts of Quaker State 10W30 Superduty lube, new Low Oil Filter. Lubricate all visible grease fittings, check air filter and PCV valve.

Sale Mon. thru Wed.
 Open Late Every Night
 Except Sat. 'til 9 p.m.

Manchester
 Exit 93, Wilbur Cross Parkway
 1145 Tolland Turnpike

2 Great Ways to Charge!
 MasterCard
 Discover Card

"THE WAY I HEARD IT"
 by John Gruber

We'll continue with our dis- tribution but are longer to the extent that the column of air produces the not "B-flat" for the flutes, oboes, and English horn. Just below these on the conductor's score come the clarinets. The flute, we re- turn to take this into account when found, had no mouthpiece, the clarinet has sharp keys and "B-flat" double reeds; the clarinet has a single reed.

I guess everybody knows what a clarinet looks like. It's larger in diameter than the oboe and has the same multiplicity of keys. From a distance they look quite similar but they don't play anything alike. To begin with they are the stages in- stead of a double reed. The flutes and oboes play "C" if you write "C" just to confuse you a little more.)

Clarinet is "C" do exist, but they are a bit on the shrill side and it was found that a some- what longer instrument had a mellower tone. Accordingly, they still finger like the "C" in-

strument but are longer to the extent that the column of air produces the not "B-flat" for the flutes, oboes, and English horn. Just below these on the conductor's score come the clarinets. The flute, we re- turn to take this into account when found, had no mouthpiece, the clarinet has sharp keys and "B-flat" double reeds; the clarinet has a single reed.

I guess everybody knows what a clarinet looks like. It's larger in diameter than the oboe and has the same multiplicity of keys. From a distance they look quite similar but they don't play anything alike. To begin with they are the stages in- stead of a double reed. The flutes and oboes play "C" if you write "C" just to confuse you a little more.)

Clarinet is "C" do exist, but they are a bit on the shrill side and it was found that a some- what longer instrument had a mellower tone. Accordingly, they still finger like the "C" in-

Below the clarinets come the bassoons. There are bass oboes in fact. They have double reeds and sound something like a saxophone. Incidentally it saxo- phones are demanded by a com- poser (very rarely) they come between the clarinets and the bassoons on the score.

Bassoons can play the "C" below the bass staff, and can, if pressed, play the "C" in the third space of the treble staff; thus they have a possible range of three octaves, but the top oc- tave does not have the charac- teristic bassoon tone and is seldom used except occasionally for weird effects.

There is a contra-bassoon sometimes called the double-bassoon. It is the lowest in- strument in the orchestra and can produce the lowest "C" on a piano. Beethoven once used a bassoon humorously in his Sixth Symphony, and ever since it has been known as the "Crown of the orchestra." Accordingly the double-bassoon should be twice as funny, variable Shakespearian clown.

"Faint so." It is almost never funny, and frequently is sepulchral in tone. What was funny about Beethoven's use of

Sheinwold on Bridge
 EQUIPMENT NEEDED FOR BRIDGE GAMES
 By ALFRED SHEINWOLD

What equipment do you need for a game of bridge? A couple of decks of cards, a score pad, a pencil and four live bodies. You might also need a 12-inch ruler, preferably of some heavy wood.

North dealer
 North-South vulnerable
 Opening lead — King of Dis-

THEATER TIME SCHEDULE

Burnside — "The Godfather"
 7:30, 9:30, 9:30.
 A Theatre — "The Last Picture Show" 7:15, 9:15.
 Manchester Drive-In — Re- open Friday.
 East Hartford Drive-In — Re- open Friday.
 East Windsor Drive-In — Re- open Friday.

Caldwell Sees No Bailey Threat
 HARTFORD (AP) — Senate Majority Leader J. Edward Caldwell, D-Bridgeport, says he sees "no serious threat" to the leadership of state Democratic Chairman John M. Bailey.

Bailey "is an excellent leader and he will be down to the leadership of the Democratic Party," Caldwell said Sunday.

WPO's "Newest" program.

On congressional reapportion- ment, Caldwell reiterated that he would not tolerate any plan that would split Bridgeport.

Manchester Evening Herald
 Published Daily Except Sundays and Holidays, at 31 Himes Street, Manchester, Conn.
 Telephone: 688-7811
 Second Class Postage Paid at Manchester, Conn., Office

SUBSCRIPTION RATES
 Payable in Advance
 One Year (12 Issues) \$12.00
 Six Months (6 Issues) \$6.00
 Three Months (3 Issues) \$3.00
 Single Copy 25¢

Spring Band Concert
 Presented by
 MANCHESTER HIGH SCHOOL BAND
 and
 WINDSOR HIGH SCHOOL
 featuring Donald Chamberlain

in
 Gertrude's RHAPSODY IN BLUE
 and
 CONCERT BANDS IN 1812 OVERTURE

FRIDAY EVENING, APRIL 7, 1972 — 8:15 P.M.
 BALLEYS AUDITORIUM
 General Admission — \$1.00

The Godfather
 "THE GODFATHER IS A MOVIE THAT SEEMS TO HAVE EVERYTHING! WARMTH, VIOLENCE, NOSTALGIA, THE CHARISMA OF MARLON BRANDO IN ONE OF HIS FINEST PERFORMANCES, AND THE DYNAMIC SWEEP OF AN ITALIAN-AMERICAN 'GONE WITH THE WIND'!"

BURNSIDE
 Check Daily Show Time
 18 Film from 1.00, Ends 11

Music
The Rich Combination
 News
WRCH
 910 AM 100 FM

ARE YOU OUR STAR SPANGLED GIRL?

WE ARE LOOKING FOR THAT GIRL, WITH A SPECIAL BLEND OF TALENT AND HUMOR TO BE OUR LEAD . . .

Reading: Monday, April 8, 1972, 7:30 P.M.
 "Star Spangled Girl" by Neil Simon, June 2-3.
 Manchester Community Players
 485 E. Middle Tpke.
 Print-Mart Bldg., Second Floor
 Manchester (Green), Conn.

THE FAMILY PLACE
 • MR. STEAK •

244 CENTER ST. MANCHESTER
 Phone 644-1995
 OPEN 7 DAYS
 11:00 a.m. to 9:00 p.m.

LOOK! LOOK! 25¢ gives you
 APPETIZER, DESSERT, and BEVERAGE
 With Any Meal of 2.50 or More!

Offer Good Daily, Except Friday and Saturday, 5:00 to 8:00 P.M., and Certain Holidays . . .

CALLING ALL CHILDREN (12 or under)
 Inquire About Our FREE BIRTHDAY CLUB OFFER!

Escape Triggers Sheriff's Hair-In
 REDWOOD CITY, Calif. (AP) — Ben Matlock County Sheriff Earl Whitmore is staging a hair-in because of an embarrassing misadventure from his jail.

"I'm not kidding," he told a news conference Sunday. "I'm willing to let his hair grow until the end of the month, but I'm not kidding."

Nine prisoners who got hold of a call key fled the lockup March 22. One was caught the next day during a bank robbery.

"I don't care if it grows down to my waist," grumped Whitmore. "I won't get a haircut until all the men are back!"

Tough on Mothers
 DUBLIN (AP) — It's tough to be a new mother in Dublin these days.

At the National Maternity Hospital patients have to lie on their backs for 24 hours after the birth of the child because of lack of space.

Christmas Baby Born on Easter
 TULSA, Okla. (AP) — Easter Sunday than Christmas was merry.

Christmas, in this case, was Harold Christmas, a 43-year-old broken Arrow man whose wife, Dorothy gave birth to a girl Easter Sunday afternoon.

The merry Christmas was kidded by friends and relatives about the happenstance. The child, their fourth, is named Vickie Lynn.

Robert Redford, George Segal & Co. The HotRock
 COLOR BY DE LUXE

AT 7:30 & 9:30
 CHILD UNDER 14 TO BE ACCOMPANIED BY ADULT FOR EVE. PROGRAMS

FILM RATING GUIDE
 For Parents and Their Children

G GENERAL AUDIENCE All Ages Admitted

PG PARENTAL GUIDANCE SUGGESTED Some Material May Be Inappropriate for Children Under 10

R RESTRICTED Under 17 requires accompanying Parent or Guardian

X NO ONE UNDER 17 ADMITTED (Age limit may vary in certain areas)

MPPAA

5th WEEK!
 NOMINATED FOR 8 ACADEMY AWARDS
 INCLUDING BEST PICTURE
 Best Picture
 Best Actor
 Best Actress
 Best Director
 Best Screenplay
 Best Music
 Best Editing
 Best Sound
 Best Costume Design
 Best Hair Styling
 Best Makeup
 Best Production Design
 Best Visual Effects

THE LAST PICTURE SHOW

Top Hat Restaurant
 257 BROAD STREET—MANCHESTER
 OWNED AND OPERATED BY TOM AND LAURA COLLA

BREAKFAST
 2 EGGS WITH TOAST 49¢
 PANCAKES
 3 SLICES OF FRENCH TOAST

SANDWICHES
 HAMBURG HOT DOG 39¢
 GRILLED CHEESE
 ROAST BEEF
 BIG BEEF BURGER
 HAM, HOT OR COOL 60¢

SEAFOOD
 COMBINATION SEAFOOD DINNER \$1.95
 SIRLOIN STEAK \$1.95
 FISH 'N CHIPS \$1.95
 CLAM DINNERS \$1.75
 FISH SANDWICH \$1.50

NOTE: This is Only a Partial Listing!

SLEEP SHOP
 SPECIAL OF THE WEEK
It's Twins!
 AT BLAU FURNITURE STORES

WHERE THIS SPECIAL PURCHASE IS MADE POSSIBLE
 With BLAU'S New 3 Store Buying Power — Hundreds of Twin Sets

FIRM ECLIPSE MATTRESS
MATCHING BOX SPRINGS
MATCHING SETS!

FREE DELIVERY
\$69.00 PER SET

formerly KEITH'S of Manchester
 1115 Main St. — 643-4159

OPEN TONIGHT, and EVERY MON., THURS., and FRI. NIGHT
 for your shopping convenience!

today's FUNNY RACE TRACK
 BET: HORSE-PLAY

© 1972 by NHA, Inc.

Today's FUNNY will pay \$1.00 for each original "funny" card and \$1.00 for each "funny" card that is a duplicate of the original.

Highways Beget Highways, Say Opponents of I-84

Why do we have to build a highway to provide for the needs of a population 20 years hence, when these needs would not exist if the highway were not built?

Continued as it sounds, this was one of the most important concepts advanced recently at a public meeting in Andover, sponsored by the I-84 coalition. Members of three of the affiliated groups, the Representative of Coventry, (RRP) the Mansfield Environmental Protection Agency (MEPA) and the Andover Citizens Task-

Escape Triggers Sheriff's Hair-In
 REDWOOD CITY, Calif. (AP) — Ben Matlock County Sheriff Earl Whitmore is staging a hair-in because of an embarrassing misadventure from his jail.

"I'm not kidding," he told a news conference Sunday. "I'm willing to let his hair grow until the end of the month, but I'm not kidding."

Nine prisoners who got hold of a call key fled the lockup March 22. One was caught the next day during a bank robbery.

"I don't care if it grows down to my waist," grumped Whitmore. "I won't get a haircut until all the men are back!"

Highways Beget Highways, Say Opponents of I-84

Why do we have to build a highway to provide for the needs of a population 20 years hence, when these needs would not exist if the highway were not built?

Continued as it sounds, this was one of the most important concepts advanced recently at a public meeting in Andover, sponsored by the I-84 coalition. Members of three of the affiliated groups, the Representative of Coventry, (RRP) the Mansfield Environmental Protection Agency (MEPA) and the Andover Citizens Task-

Highways Beget Highways, Say Opponents of I-84

Why do we have to build a highway to provide for the needs of a population 20 years hence, when these needs would not exist if the highway were not built?

Continued as it sounds, this was one of the most important concepts advanced recently at a public meeting in Andover, sponsored by the I-84 coalition. Members of three of the affiliated groups, the Representative of Coventry, (RRP) the Mansfield Environmental Protection Agency (MEPA) and the Andover Citizens Task-

Highways Beget Highways, Say Opponents of I-84

Why do we have to build a highway to provide for the needs of a population 20 years hence, when these needs would not exist if the highway were not built?

Continued as it sounds, this was one of the most important concepts advanced recently at a public meeting in Andover, sponsored by the I-84 coalition. Members of three of the affiliated groups, the Representative of Coventry, (RRP) the Mansfield Environmental Protection Agency (MEPA) and the Andover Citizens Task-

Highways Beget Highways, Say Opponents of I-84

Why do we have to build a highway to provide for the needs of a population 20 years hence, when these needs would not exist if the highway were not built?

Continued as it sounds, this was one of the most important concepts advanced recently at a public meeting in Andover, sponsored by the I-84 coalition. Members of three of the affiliated groups, the Representative of Coventry, (RRP) the Mansfield Environmental Protection Agency (MEPA) and the Andover Citizens Task-

Highways Beget Highways, Say Opponents of I-84

Why do we have to build a highway to provide for the needs of a population 20 years hence, when these needs would not exist if the highway were not built?

Continued as it sounds, this was one of the most important concepts advanced recently at a public meeting in Andover, sponsored by the I-84 coalition. Members of three of the affiliated groups, the Representative of Coventry, (RRP) the Mansfield Environmental Protection Agency (MEPA) and the Andover Citizens Task-

Highways Beget Highways, Say Opponents of I-84

Why do we have to build a highway to provide for the needs of a population 20 years hence, when these needs would not exist if the highway were not built?

Continued as it sounds, this was one of the most important concepts advanced recently at a public meeting in Andover, sponsored by the I-84 coalition. Members of three of the affiliated groups, the Representative of Coventry, (RRP) the Mansfield Environmental Protection Agency (MEPA) and the Andover Citizens Task-

Highways Beget Highways, Say Opponents of I-84

Why do we have to build a highway to provide for the needs of a population 20 years hence, when these needs would not exist if the highway were not built?

Continued as it sounds, this was one of the most important concepts advanced recently at a public meeting in Andover, sponsored by the I-84 coalition. Members of three of the affiliated groups, the Representative of Coventry, (RRP) the Mansfield Environmental Protection Agency (MEPA) and the Andover Citizens Task-

Highways Beget Highways, Say Opponents of I-84

Why do we have to build a highway to provide for the needs of a population 20 years hence, when these needs would not exist if the highway were not built?

Continued as it sounds, this was one of the most important concepts advanced recently at a public meeting in Andover, sponsored by the I-84 coalition. Members of three of the affiliated groups, the Representative of Coventry, (RRP) the Mansfield Environmental Protection Agency (MEPA) and the Andover Citizens Task-

Highways Beget Highways, Say Opponents of I-84

Why do we have to build a highway to provide for the needs of a population 20 years hence, when these needs would not exist if the highway were not built?

Continued as it sounds, this was one of the most important concepts advanced recently at a public meeting in Andover, sponsored by the I-84 coalition. Members of three of the affiliated groups, the Representative of Coventry, (RRP) the Mansfield Environmental Protection Agency (MEPA) and the Andover Citizens Task-

Highways Beget Highways, Say Opponents of I-84

Why do we have to build a highway to provide for the needs of a population 20 years hence, when these needs would not exist if the highway were not built?

Continued as it sounds, this was one of the most important concepts advanced recently at a public meeting in Andover, sponsored by the I-84 coalition. Members of three of the affiliated groups, the Representative of Coventry, (RRP) the Mansfield Environmental Protection Agency (MEPA) and the Andover Citizens Task-

Highways Beget Highways, Say Opponents of I-84

Why do we have to build a highway to provide for the needs of a population 20 years hence, when these needs would not exist if the highway were not built?

Continued as it sounds, this was one of the most important concepts advanced recently at a public meeting in Andover, sponsored by the I-84 coalition. Members of three of the affiliated groups, the Representative of Coventry, (RRP) the Mansfield Environmental Protection Agency (MEPA) and the Andover Citizens Task-

Highways Beget Highways, Say Opponents of I-84

Why do we have to build a highway to provide for the needs of a population 20 years hence, when these needs would not exist if the highway were not built?

Continued as it sounds, this was one of the most important concepts advanced recently at a public meeting in Andover, sponsored by the I-84 coalition. Members of three of the affiliated groups, the Representative of Coventry, (RRP) the Mansfield Environmental Protection Agency (MEPA) and the Andover Citizens Task-

Highways Beget Highways, Say Opponents of I-84

Why do we have to build a highway to provide for the needs of a population 20 years hence, when these needs would not exist if the highway were not built?

Continued as it sounds, this was one of the most important concepts advanced recently at a public meeting in Andover, sponsored by the I-84 coalition. Members of three of the affiliated groups, the Representative of Coventry, (RRP) the Mansfield Environmental Protection Agency (MEPA) and the Andover Citizens Task-

Highways Beget Highways, Say Opponents of I-84

Why do we have to build a highway to provide for the needs of a population 20 years hence, when these needs would not exist if the highway were not built?

Continued as it sounds, this was one of the most important concepts advanced recently at a public meeting in Andover, sponsored by the I-84 coalition. Members of three of the affiliated groups, the Representative of Coventry, (RRP) the Mansfield Environmental Protection Agency (MEPA) and the Andover Citizens Task-

Highways Beget Highways, Say Opponents of I-84

Why do we have to build a highway to provide for the needs of a population 20 years hence, when these needs would not exist if the highway were not built?

Continued as it sounds, this was one of the most important concepts advanced recently at a public meeting in Andover, sponsored by the I-84 coalition. Members of three of the affiliated groups, the Representative of Coventry, (RRP) the Mansfield Environmental Protection Agency (MEPA) and the Andover Citizens Task-

Highways Beget Highways, Say Opponents of I-84

Why do we have to build a highway to provide for the needs of a population 20 years hence, when these needs would not exist if the highway were not built?

Continued as it sounds, this was one of the most important concepts advanced recently at a public meeting in Andover, sponsored by the I-84 coalition. Members of three of the affiliated groups, the Representative of Coventry, (RRP) the Mansfield Environmental Protection Agency (MEPA) and the Andover Citizens Task-

Highways Beget Highways, Say Opponents of I-84

Why do we have to build a highway to provide for the needs of a population 20 years hence, when these needs would not exist if the highway were not built?

Continued as it sounds, this was one of the most important concepts advanced recently at a public meeting in Andover, sponsored by the I-84 coalition. Members of three of the affiliated groups, the Representative of Coventry, (RRP) the Mansfield Environmental Protection Agency (MEPA) and the Andover Citizens Task-

Highways Beget Highways, Say Opponents of I-84

Why do we have to build a highway to provide for the needs of a population 20 years hence, when these needs would not exist if the highway were not built?

Continued as it sounds, this was one of the most important concepts advanced recently at a public meeting in Andover, sponsored by the I-84 coalition. Members of three of the affiliated groups, the Representative of Coventry, (RRP) the Mansfield Environmental Protection Agency (MEPA) and the Andover Citizens Task-

Highways Beget Highways, Say Opponents of I-84

Why do we have to build a highway to provide for the needs of a population 20 years hence, when these needs would not exist if the highway were not built?

Continued as it sounds, this was one of the most important concepts advanced recently at a public meeting in Andover, sponsored by the I-84 coalition. Members of three of the affiliated groups, the Representative of Coventry, (RRP) the Mansfield Environmental Protection Agency (MEPA) and the Andover Citizens Task-

Highways Beget Highways, Say Opponents of I-84

Why do we have to build a highway to provide for the needs of a population 20 years hence, when these needs would not exist if the highway were not built?

Continued as it sounds, this was one of the most important concepts advanced recently at a public meeting in Andover, sponsored by the I-84 coalition. Members of three of the affiliated groups, the Representative of Coventry, (RRP) the Mansfield Environmental Protection Agency (MEPA) and the Andover Citizens Task-

Highways Beget Highways, Say Opponents of I-84

Why do we have to build a highway to provide for the needs of a population 20 years hence, when these needs would not exist if the highway were not built?

Continued as it sounds, this was one of the most important concepts advanced recently at a public meeting in Andover, sponsored by the I-84 coalition. Members of three of the affiliated groups, the Representative of Coventry, (RRP) the Mansfield Environmental Protection Agency (MEPA) and the Andover Citizens Task-

at last... fresh cosmetics because you make them yourself at home...

Well Spring of Beauty

With Bonne Bell's Well Spring of Beauty at D&L... first time in Hartford County!

Well Spring of Beauty

Use Well Spring alone or mix with your own Salvarsol ingredients...

Well Spring of Beauty

fruit juice, carrot juice, cucumber juice, water, white wine, beer

Well Spring of Beauty

blend your own face creams
 Lotions, moisturizers, skin conditioners

Well Spring of Beauty

a new concept in cosmetics

Well Spring of Beauty

WELL SPRING is a newly discovered source of beauty... a vital ingredient that blends instantly with Nature's offerings to produce a delicious array of creative cosmetics that are yours practically for the imagining.

The product of over two years of research, WELL SPRING is a new concept in cosmetics. Its special beauty blend integrates instantly with water-based liquids... add just a little of your favorite natural ingredient plus a couple of shakes, and watch your own custom-blended cream or lotion happen before your very eyes. You receive the benefits of Nature in addition to WELL SPRING's twenty-four selected ingredients that, moisten, soothe, and nourish on their own. Used alone, See a demonstration in our cosmetic department now.

(D&L Cosmetics — Manchester Parkade & Tri-City Plaza, Vernon)
 WELL SPRING 2.50 & 5.50

D&L FINE STORES OF FASHION

50th GOLDEN ANNIVERSARY YEAR 1922-1972

all D&L stores open Monday till 9 p.m. except New Britain open till 5:30

APR 3

APR 3

APR 3

APR 3

APR 3

APR 3

APR 3

APR 3

Bates-Dishaw



MRS. BRUCE C. BATES

The marriage of Donna Lee Bates and Bruce Dishaw...

Blakely-Topliff



MRS. BRUCE ROBERT BLAKELY

Denise Beth Midford of Ellington became the bride of David Michael Gardner...

Gardner-Midford



MRS. DAVID MICHAEL GARDNER

Denise Beth Midford of Ellington became the bride of David Michael Gardner...

The Baby Has Been Named

Bethings, Shelby Lynn, daughter of Paul J. and Dorothy...

Jan Warren To Write Essays About Home

Jan Warren of Highwood Dr., wife of Dr. David L. Warren...

DR. LAWRENCE E. LAMB Problem Can Be Conquered Ailment Sounds Like an Allergy

By Lawrence Lamb, M.D. Dear Dr. Lamb—Recently I had a CBC (complete blood count) because I had what...

Weddings

Then - Hamstedt Jan Marie Hamstedt of East Hartford became the bride...

Service Notes

Army Pvt. Michael J. Small, son of Mrs. Edwin O. Small...

Engaged

The engagement of Miss Elizabeth D. DeWitt...

College Notes

Three Manchester students have received awards totaling \$400 from civic organizations...

Area Artists Exhibit Works

Six Manchester area artists are represented at the 29th annual Exhibition of Connecticut Artists...

Meat Cookery — Know How and Why

STORIES — Meat cooks seem to be less shrinkage involved, and to know how to doctor less...

Duplicate Bridge

Results last night in a duplicate bridge game at the Italian-American Club...

Second Craft Workshop To Be Sponsored by Rec

A free workshop for arts and crafts teachers and the second of a series...

Engaged

The engagement of Miss Elizabeth D. DeWitt...

Engaged

The engagement of Miss Elizabeth D. DeWitt...

Engaged

The engagement of Miss Elizabeth D. DeWitt...

Engaged

The engagement of Miss Elizabeth D. DeWitt...

Engaged

The engagement of Miss Elizabeth D. DeWitt...

Advertisement for Carpeting and Shampooing with 10% off coupon.

Advertisement for Vernon Floor Covering with coupon.

Advertisement for Beaconway Fabric Center with coupon.

Advertisement for Color Key Vital New Approach.

Advertisement for Emanuel Women Meet Tomorrow.

Advertisement for Regal Men's Shop.

Advertisement for Regal Men's Shop.

Advertisement for Regal Men's Shop.

Large advertisement for Adam's Apple sale, featuring clothing items and a 20-70% off sale.

Advertisement for GLOBE Travel Service.

Advertisement for Treasure Chest Diamonds.

Advertisement for Treasure Chest Diamonds.

Advertisement for Treasure Chest Diamonds.

Advertisement for Treasure Chest Diamonds.

Manchester Evening Herald

PUBLISHED BY THE MANCHESTER PUBLISHING CO. 133 Main Street, Manchester, Conn. 06105

Subscription Rates: Single Copy 10c, One Month 2.50, Three Months 7.50, Six Months 14.00, One Year 28.00

MEMBER OF THE ASSOCIATED PRESS. The Associated Press is exclusively entitled to the use for publication of all news and information contained in this paper and also the right to syndicate this paper.

The Manchester Publishing Company assumes no financial responsibility for typographical errors appearing in advertisements.

Subscriber to Los Angeles Times-Washington Post Service Client of N. E. A. Service, Inc. Publishers: Raymond W. Matthews, Shannon and Cullen Inc., Special Agency - New York, Chicago, and Boston.

MEMBER ADVERTISING BUREAU OF CIRCULATION. Display advertising: 10c per line per day.

Monday, April 8

The answer was more than convincing. Indeed, it provided an unexpected demonstration of the solicited lengths to which the Chinese have gone in order to make sure their gift is every bit as complete as the zoos of America might desire.

Not only are our giant pandas to be a true pair, male and female, but the very reason they have been held in China plus long is that the Chinese wanted to make sure they had their panda version of the birds and bees lecture.

It seems that the giant pandas, left to themselves, do not instinctively know how to go about the business of setting up a family, but must learn by observing their elders. It is for such instruction our young giant pandas have been held over in Peking, when they might, without our knowing any the better, have been sent to us in a state of hopeless and helpless innocence. The pandas, instead of being an instance of Communist duplicity, are another demonstration of the thoughtfulness of Mao.

He Was Good News

The point about Gabriel Heatter was that there could, on some of those nights, be good news.

There was, for the period when his audience was greatest, a relatively simple kind of world. There was one thing going on — an unprecedented world war which involved everybody.

It involved all the continents and all the seas, and almost all of the people of the world, in one degree or another.

Somewhere, on some battlefield, in some area of civilian effort in the common struggle, in the to and fro thrusts of men and words and shells and bombs, there had to be some event, each night, which could be seized upon and cherished as "good news tonight."

It never really fooled anybody, when most of the rest of the news, when most of the real news, was bad. But it did help build up heart and blood for the acceptance of the sad and tragic news which was so plentiful; it did help people make the crucial step forward toward the next day's anxiety; he was a fool, that broadcaster, but if you needed a warm thought to lean on, at the end of a weakening day, he was always there, in his most victorious moments never threatened — Gabriel Heatter. He himself was good news.

Language And Barnyards

An item about feminist Germaine Greer appeared recently in a well-known and respected newspaper. It seems that Ms. Greer ticked off the local officials in Auckland, N. Z., with a dirty word. They issued her a summons to appear in court. The story continued: "She treated the summons with the same word authorities found objectionable — an eight-letter barnyard epithet. Further down the page the word was repeated at an open public meeting and called on people in the audience to repeat it after her."

Being cited in Auckland for bad language is indeed unfortunate, but I'm more interested in that expression "barnyard epithet." When on occasion a public figure loosens his tongue, one can have a good deal of fun with the reference in print to his "barnyard epithet."

They generally provide a hint as to what, exactly, was said. The "eight-letter" clue makes it fairly easy to guess what was on Ms. Greer's mind. But sometimes they give only a spool of symbolic gibberish (7&8) or a series of dashes. Due to their multiplicity, four-letter barnyard epithets are the most difficult to figure out. One must be sure the epithet fits the context in which it was spoken or screamed. And the word should move smoothly into the question's rhythmic rumble. This is not an ideal diversion because they don't print the answer, the most fun of the guessing barnyard epithets is still a great game. (It may even be marketable.)

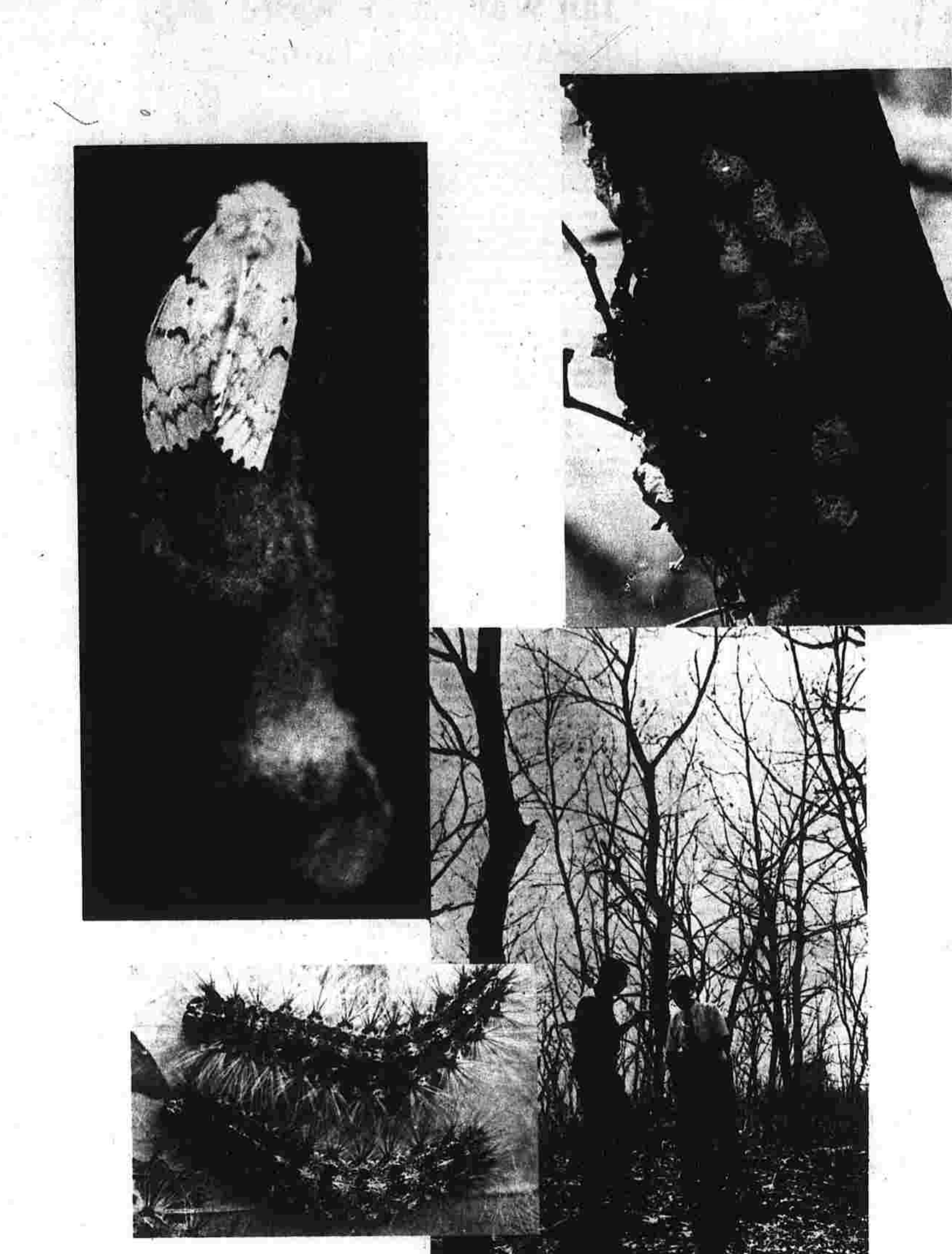
Nevertheless, I'm bothered and annoyed by these gratuitous stunts against barnyards. Why does a dirty word so often appear as a "barnyard epithet"? Some strange things undoubtedly go on around barnyards, but how many off-color epithets have you seen scratched in the dirt on the barnyard wall? Old MacDonald, you may recall, ran a clean barnyard, allowing nothing more offensive than snick and quack; and you can bet MacDonald's wife and kids never got out of line either.

It is surprising that the mighty farm lobby hasn't taken some time from its never-ending price-support drive to make a protest against the obscuring of barnyards. On the other hand, the farm lobby is full of corporations and executives these days, and anyone who has ever read a Harold Robbins novel knows how they talk. Perhaps this is a job for America's 4-H club.

One gets an idea of what cowardly cheap shots newspapers are taking at barnyards by imagining if, instead of "barnyard epithet," they described Ms. Greer's bad word as a "truck driver's curse," or a "locker-room exclamation," or a "politician's alliteration," or a "city-room obscenity." Hows would issue forth soon enough if any of these up-right phrases were held up as the archetypal dirt mouth.

It seems to me the public might better understand the true texture of recorded events, language running hot and cold (as it does), if newspapers ended allusions to barnyard life and that typographical mishmash. Germaine Greer has as much right to serve up her ideas with foul language as does Richard Nixon in his wit-graced grandiloquence.

HENNINGER IN THE NATIONAL OBSERVER.



GYPSY MOTH CYCLE: Top Left, Laying Egg Mass In Summer; Top Right, Remains Of Larvae And Egg Mass After Caterpillar Has Emerged In Spring; The Caterpillar Itself; The Defoliation

Open Forum

"Question of Underachievers?" To The Editor, A rather depressing situation appears to be developing in this town, a situation which has been revealed to far too few of the residents who, as a result, remain complacent. During the past years a movement has been underway to alter the present school structure. New innovations are being tested, some of these new concepts in education pushed on to unwilling educators in an undemocratic and unprincipled way.

If the majority of parents want less structure and more freedom for their children especially in the primary grades, if they agree with the open class concept without the necessary highly skilled teachers, then I say Manchester is the town to live in and we who believe that a child should have direction and discipline during his formative years had better think about moving from this town or transferring our children to the parochial school system.

I am not alone in strongly objecting to any group or organization in the minority imposing their will on the majority especially when in certain cases the majority happen to be our educators. I strongly support our school principal, the staff and their program and I urge all parents to become completely informed on our school system, to voice their objections or approvals, make themselves heard, for today we graduate an above the national average student but tomorrow we may very well have on our hands a young generation of confused underachievers.

Mary Sears Parent at Highland Park School "First We Ban, Next We Burn"

To The Editor: Hell Hitler! At last the first step toward Nazism has come to Connecticut. First we ban the books. Next we will burn them. Next we should tax church property.

I can just picture Adolf giggling in his grave. "Burning of the Books."

Herald Yesterdays

25 Years Ago Board of Selectmen, Board of Education and School Building committee take steps to initiate long range building program to meet future school needs.

Selectman Sherwood G. Bowens suggests old Union school be sold and converted into apartment.

Increased services may raise next year's tax rate to 29 mills; school building program would add to that total.

10 Years Ago Mrs. Glenn C. Cornish is appointed director of YWCA play-school for 1962-63 term.

Fischetti



THANKS TO YOUR IDEA, JONES, THERE WON'T BE ANY LAYOFFS IN THIS SHOP

Bolton School Board Submits Budget of \$1,151,588

The Bolton Board of Education has submitted a budget request of \$1,151,588 for the 1975-76 school year to the Board of Finance. The figure is an increase of \$70,881 or 6.3 per cent over the present year's operating budget.

State grants of \$300,627.26 will offset the request, resulting in a total local appropriation of \$850,961. Dr. Joseph Castagna, superintendent of schools, notes that since teacher salary negotiations have gone into mediation, salary estimates in the budget are based on the board's last offer.

Dr. Castagna expressed concern over the cuts which have been made in the school board budget over the past three years, noting that a total of \$250,019.64 has been eliminated from requested appropriations \$784,982 is being sought for instruction, compared with \$784,319 this year.

ROBINSON DAY CAMP for BOYS and GIRLS

AGES 4-15 LAKE GARDA, FARMINGTON (MANCHESTER TRANSPORTATION AVAILABLE) JUNE 26 - AUGUST 18 Enrollments of two or more weeks now being accepted.



Choicest Meats In Town! TUESDAY ONLY SPECIAL! Sirloin Steak \$1.29 Short Steak \$1.43 HIGHLAND PARK MARKET 317 Highland St., Manchester - Phone 646-4277



It's more fun when it's your own backyard

What fun is there planting a tree, a shrub or garden in a backyard that's not your own? When you own your own home every horticulture endeavor becomes a rewarding experience.

See Savings & Loan where 81 years of experience in home financing is yours for the asking. Learn about the advantages of open-end Savings & Loan mortgages. Come in tomorrow and talk to the experts. There's no obligation, of course.

MANCHESTER'S OLDEST FINANCIAL INSTITUTION 1007 MAIN STREET, NEAR MAPLE STREET - TEL. 649-4588 COVENTRY OFFICE - ROUTE 31 - TEL. 742-7321

NOTICE

Flushing of the water mains of the Town of Manchester Water Department will begin April 4, 1972. Flushing will continue Tuesdays through Friday until finished.

Read Herald Advertisements

SPECIAL ENROLLMENT

CMS Membership is always open to all Connecticut residents, but this special offer makes protection available two months early. APPLICATIONS RECEIVED BY APRIL 14TH WILL BE EFFECTIVE JUNE 1, 1972

Table with columns for 'IF YOU ARE UNDER 65' and 'IF YOU ARE OVER 65'. Lists various medical services and their costs.

Table with columns for 'IN-HOSPITAL MEDICAL CARE' and 'SPECIAL SERVICES'. Lists services like surgery, obstetrics, radiology, etc.

Table with columns for 'GUARANTEE OF TOTAL PAYMENT' and 'SERVICE BENEFITS'. Lists payment guarantees and service benefits.

and participate in Medicare (Part B) you may apply for either CMS 65 CONTRACT Plan A or Plan B which add to the Benefits of Medicare (Part B). The CMS 65 CONTRACTS include coverage only for those medical services which are covered under Medicare (Part B).

Application form for CMS membership with fields for name, address, date of birth, and marital status.

Manchester Area

Police Report

One South Windsor man reported to South Windsor police that a 1967 Buick Wildcat was taken from his driveway Friday night and another reported that a 1967 Buick Wildcat was taken from his boat, also parked in the driveway.

South Windsor police also investigated a three-car accident, Friday on Rt. 30, near the Manchester line, and arrested one driver.

Steven Mosher, 16 of 17 Williams St., Vernon, was charged with failure to grant one-half the highway. Mosher was driving west on Rt. 30 according to police.

Police said Mosher was on the eastbound lane and side-swiped a car driven by William W. Deering of Ellington Rd., South Windsor.

According to police, Deering swerved to avoid the Mosher car and struck a third car being driven by Elizabeth Shewer, Fox South Windsor.

The Shewer car was in a private driveway waiting to be driven out, police said. No injuries were reported.

Mosher is scheduled to appear in Circuit Court, East Hartford, April 17.

VERNON. Vernon police arrested Richard Pagan, 30 of Union St., Manchester, Sunday and charged him with operating under the influence of liquor and failure to pass left of a parked vehicle.

He later was charged with causing a disturbance and resisting an officer in connection with a disturbance caused when the officer was making his investigation.

The incident involved a two-car accident on Union St. in which, according to police, the Pagan car struck a parked car belonging to Marilyn Davison of Hartford. Pagan was released after posting a \$750 non-surety bond for appearance in Circuit Court 12, Rockville, May 2.

Also arrested Sunday was John K. Slater, 26 of 2nd Ave., Vernon. He was charged with disorderly conduct in connection with a disturbance complaint. He was released on his promise to appear in Circuit Court, Rockville, April 18.

TV Tonight See Saturday's TV Herald for Complete Listings.

- 5:00 (8) I Dream of Jeannie (18) Jim and Tammy (24) Mister Rogers (30) Hogan's Heroes (40) I Love Lucy (42) Truth or Consequences (52) Hogan's Heroes (54) Electric Company (60) Gilligan's Island (60) News (62) What's Happening (6:00 (8-8:30) News - Weather and Sports (18) I Spy (24) Hodgepodge Lodge (30) To Tell the Truth (40) Daniel Boone (6:30 (3) CBS News (8) ABC News (25-30) NBC News (24) Outlook (6:35 (40) News (7:00 (3) Movie (8) What's My Line? (18) Dick Van Dyke (25-30) News (24) Free-Fox-All (7:30 (18) This Is Your Life (18) Casual Camera (22) For Those Who Follow (24) Connecticut Newsroom (40) Let's Make a Deal (18) Howan and Marlin's Laugh-In (Repeat) (8-9) "Hiltons" At the Wheel (18) News (24) The Andersonville Story (8:30 (18) Public Affairs (8:30 (3) Here's Lucy (Repeat) (8:40) Movie (8:50-9) Movie (Repeat) (9:30 (2) Doris Day Show (Repeat) (18) 700 Club (10:00 (1) Sonny & Cher Comedy Hour (Repeat) (10:30 (24) Book Beat (11:30 (9-9:30-9:40) News - Weather and Sports (11:30 (1) Movie (Repeat) (8-8) Dick Cavett Show (23-24) Tonight Show

Obituary

James G. Brady, 54, of 11 Sumner St., died yesterday at his home after a long illness. He was the husband of Mrs. Gertrude Brady, who died recently for a year and a half.

Mr. Brady was born Jan. 31, 1918 in Stamford, son of Mrs. Mary and James G. Brady. He was a member of the Holy Trinity Church, and had lived in Vernon for the past 20 years. He had been employed for 32 years at the Pratt and Whitney Division of United Aircraft Corp., East Hartford. He was a communicant of Sacred Heart Church, a member of Camp Hill Council, KoK, Manchester, and a member of the American Legion, Post 1234, East Hartford. He was also a member of the Fourth Degree, KoK, Hartford. Survivors, besides his wife and mother, are a son, Timothy G. Brady of Vernon; a daughter, Miss Sharon E. Brady of Los Angeles, Calif.; three brothers, Joseph Brady and William Brady, both of Bristol, and the Mosher car, for some time in the eastbound lane and side-swiped a car driven by William W. Deering of Ellington Rd., South Windsor.

According to police, Deering swerved to avoid the Mosher car and struck a third car being driven by Elizabeth Shewer, Fox South Windsor. The Shewer car was in a private driveway waiting to be driven out, police said. No injuries were reported. Mosher is scheduled to appear in Circuit Court, East Hartford, April 17.

VERNON. Vernon police arrested Richard Pagan, 30 of Union St., Manchester, Sunday and charged him with operating under the influence of liquor and failure to pass left of a parked vehicle.

He later was charged with causing a disturbance and resisting an officer in connection with a disturbance caused when the officer was making his investigation.

The incident involved a two-car accident on Union St. in which, according to police, the Pagan car struck a parked car belonging to Marilyn Davison of Hartford. Pagan was released after posting a \$750 non-surety bond for appearance in Circuit Court 12, Rockville, May 2.

Also arrested Sunday was John K. Slater, 26 of 2nd Ave., Vernon. He was charged with disorderly conduct in connection with a disturbance complaint. He was released on his promise to appear in Circuit Court, Rockville, April 18.

TV Tonight See Saturday's TV Herald for Complete Listings.

George H. McGrath, 71, of 162 Main St., Hartford, died yesterday at the Memorial Hospital. He was the husband of Mrs. Helen Robinson McGrath. Mr. McGrath was born April 2, 1901 in St. Andrews, Fla., and had lived in Manchester for 20 years. He was a member of St. Mary's Episcopal Church. Survivors, besides his wife, are a daughter, Mrs. Fannie J. Landen of Tolland; and two grandchildren.

Mr. McGrath was born April 2, 1901 in St. Andrews, Fla., and had lived in Manchester for 20 years. He was a member of St. Mary's Episcopal Church. Survivors, besides his wife, are a daughter, Mrs. Fannie J. Landen of Tolland; and two grandchildren.

Mr. McGrath was born April 2, 1901 in St. Andrews, Fla., and had lived in Manchester for 20 years. He was a member of St. Mary's Episcopal Church. Survivors, besides his wife, are a daughter, Mrs. Fannie J. Landen of Tolland; and two grandchildren.

Mr. McGrath was born April 2, 1901 in St. Andrews, Fla., and had lived in Manchester for 20 years. He was a member of St. Mary's Episcopal Church. Survivors, besides his wife, are a daughter, Mrs. Fannie J. Landen of Tolland; and two grandchildren.

Mr. McGrath was born April 2, 1901 in St. Andrews, Fla., and had lived in Manchester for 20 years. He was a member of St. Mary's Episcopal Church. Survivors, besides his wife, are a daughter, Mrs. Fannie J. Landen of Tolland; and two grandchildren.

Mr. McGrath was born April 2, 1901 in St. Andrews, Fla., and had lived in Manchester for 20 years. He was a member of St. Mary's Episcopal Church. Survivors, besides his wife, are a daughter, Mrs. Fannie J. Landen of Tolland; and two grandchildren.

Mr. McGrath was born April 2, 1901 in St. Andrews, Fla., and had lived in Manchester for 20 years. He was a member of St. Mary's Episcopal Church. Survivors, besides his wife, are a daughter, Mrs. Fannie J. Landen of Tolland; and two grandchildren.

Mr. McGrath was born April 2, 1901 in St. Andrews, Fla., and had lived in Manchester for 20 years. He was a member of St. Mary's Episcopal Church. Survivors, besides his wife, are a daughter, Mrs. Fannie J. Landen of Tolland; and two grandchildren.

Mr. McGrath was born April 2, 1901 in St. Andrews, Fla., and had lived in Manchester for 20 years. He was a member of St. Mary's Episcopal Church. Survivors, besides his wife, are a daughter, Mrs. Fannie J. Landen of Tolland; and two grandchildren.

Mr. McGrath was born April 2, 1901 in St. Andrews, Fla., and had lived in Manchester for 20 years. He was a member of St. Mary's Episcopal Church. Survivors, besides his wife, are a daughter, Mrs. Fannie J. Landen of Tolland; and two grandchildren.

Mr. McGrath was born April 2, 1901 in St. Andrews, Fla., and had lived in Manchester for 20 years. He was a member of St. Mary's Episcopal Church. Survivors, besides his wife, are a daughter, Mrs. Fannie J. Landen of Tolland; and two grandchildren.

Mr. McGrath was born April 2, 1901 in St. Andrews, Fla., and had lived in Manchester for 20 years. He was a member of St. Mary's Episcopal Church. Survivors, besides his wife, are a daughter, Mrs. Fannie J. Landen of Tolland; and two grandchildren.

Mr. McGrath was born April 2, 1901 in St. Andrews, Fla., and had lived in Manchester for 20 years. He was a member of St. Mary's Episcopal Church. Survivors, besides his wife, are a daughter, Mrs. Fannie J. Landen of Tolland; and two grandchildren.

Home Makers Meet Tomorrow

The Creative Homemakers of Andover will meet tomorrow at 8 p.m. at the old town hall on R. 6.

Members are asked to bring along whatever craft or project they are working on for the arts and crafts booth at the annual PTA Fair. The Creative Homemakers group this year is featuring a wide variety of projects, including needlework, knitting, crocheting, sewing, embroidery, etc.

Mrs. Ruth Hutchinson, spokesman for the group, said that it must be determined at this meeting just what the booth will have to offer, the prices to charge, etc.

Mrs. Hutchinson asks that any women in Andover who have handmade items or are willing to make some to contribute to the fair, to either attend the meeting or contact her with their offer.

Meeting Changed John Storm, GOP Town Chairman, said today that the committee's meeting has been scheduled for Friday instead of tomorrow night to avoid conflict with the hearing scheduled on Rt. 184.

Mrs. Anne Roy, 81, of Providence, R. I., mother of Albert G. Roy of 103 Prospect St., died Saturday at the Roger Williams Hospital, Providence.

Mrs. Anne Roy, 81, of Providence, R. I., mother of Albert G. Roy of 103 Prospect St., died Saturday at the Roger Williams Hospital, Providence.

Mrs. Anne Roy, 81, of Providence, R. I., mother of Albert G. Roy of 103 Prospect St., died Saturday at the Roger Williams Hospital, Providence.

Mrs. Anne Roy, 81, of Providence, R. I., mother of Albert G. Roy of 103 Prospect St., died Saturday at the Roger Williams Hospital, Providence.

Mrs. Anne Roy, 81, of Providence, R. I., mother of Albert G. Roy of 103 Prospect St., died Saturday at the Roger Williams Hospital, Providence.

Mrs. Anne Roy, 81, of Providence, R. I., mother of Albert G. Roy of 103 Prospect St., died Saturday at the Roger Williams Hospital, Providence.

Mrs. Anne Roy, 81, of Providence, R. I., mother of Albert G. Roy of 103 Prospect St., died Saturday at the Roger Williams Hospital, Providence.

Mrs. Anne Roy, 81, of Providence, R. I., mother of Albert G. Roy of 103 Prospect St., died Saturday at the Roger Williams Hospital, Providence.

Mrs. Anne Roy, 81, of Providence, R. I., mother of Albert G. Roy of 103 Prospect St., died Saturday at the Roger Williams Hospital, Providence.

Mrs. Anne Roy, 81, of Providence, R. I., mother of Albert G. Roy of 103 Prospect St., died Saturday at the Roger Williams Hospital, Providence.

Mrs. Anne Roy, 81, of Providence, R. I., mother of Albert G. Roy of 103 Prospect St., died Saturday at the Roger Williams Hospital, Providence.

Mrs. Anne Roy, 81, of Providence, R. I., mother of Albert G. Roy of 103 Prospect St., died Saturday at the Roger Williams Hospital, Providence.

Mrs. Anne Roy, 81, of Providence, R. I., mother of Albert G. Roy of 103 Prospect St., died Saturday at the Roger Williams Hospital, Providence.

Mrs. Anne Roy, 81, of Providence, R. I., mother of Albert G. Roy of 103 Prospect St., died Saturday at the Roger Williams Hospital, Providence.

Mrs. Anne Roy, 81, of Providence, R. I., mother of Albert G. Roy of 103 Prospect St., died Saturday at the Roger Williams Hospital, Providence.

Mrs. Anne Roy, 81, of Providence, R. I., mother of Albert G. Roy of 103 Prospect St., died Saturday at the Roger Williams Hospital, Providence.

Mrs. Anne Roy, 81, of Providence, R. I., mother of Albert G. Roy of 103 Prospect St., died Saturday at the Roger Williams Hospital, Providence.

Mrs. Anne Roy, 81, of Providence, R. I., mother of Albert G. Roy of 103 Prospect St., died Saturday at the Roger Williams Hospital, Providence.

Mrs. Anne Roy, 81, of Providence, R. I., mother of Albert G. Roy of 103 Prospect St., died Saturday at the Roger Williams Hospital, Providence.

I-84 Hearing Still On Despite Petition by Foes

The recommended corridor location provides for development of a wildlife management, recreation and highway rest area through the southern edge of the state forest.

The corridor location is not a specific alignment, the DOT emphasizes, and does not involve design of the highway.

The recommendation, made by the Maguire environmental study after consideration of nine alternate corridors.

The proposed I-84 from Hartford to Providence is a much-needed link in southern New England's Interstate highway system, according to the DOT.

Eventually, I-84 would run about 210 miles from Scranton, Pa., to Providence.

Opponents say that I-84 is not needed, not justified, and not wanted. The petition states that the proposed route would take all steps necessary to see that the proposed plan is not pursued and that alternative means of transporting people in the area are developed.

Maps, drawings, and other information developed by the DOT will be available at tomorrow night's public hearing.

Moderator of the hearing will be Israel Reinkoff, DOT director of planning.

Written statements of exhibits or exhibits concerning the project may be submitted at the public hearing, or can be sent to the DOT, 17 Van Dyke Ave., Hartford, until April 14.

The written statements or exhibits will be considered in the same way as oral statements recorded at the hearing.

Manuscript Editor: The search for Arabian Oil, Stegner; MacArthur, Whitner; invitation to join a Personal Story, Whitney; Woodall's Trailing Paria and Campgrounds, Wood; Carol for the Twelve Days, Young.

Also, two U.S. Department of Interior publications, "It's Your World, The Grassroots Conservation Story and Quest for Quality."

SNOWMOBILE NOTES The Tolland Snowmobiler's Inc. are winding up their first year with the scheduling of three activities this month.

The annual dinner and buffet was held Saturday at the Kosciuszko Hall in Rockville.

The election of new officers will be held April 5 at 7 p.m. at Moose Meadow Lodge in West Willington. Nominations Committee are Claire Aubin, Diane Johnston, Peter Chabiano and Walter Wood.

The club's first annual banquet and installation of officers will be held April 13 at Flano's Restaurant, Bolton. The banquet is under the direction of Ray Aubin.

Summing up the club's first year, Rudy Kowalski, president of the club, termed the season "rewarding" despite the lack of snow. "As this winter sport expands, it will be almost a necessity to join some club, local or otherwise, and I feel that next year will see our club increase greatly in size."

He views clubs such as the local one as a "protection against discriminatory legislation and biased prejudice."

At present the local club has 50 active members and several associate members.

Manchester Evening Herald Tolland correspondent Bette Quatral, tel. 875-8485.

Jail Trials Speed Calendar PHILADELPHIA (AP) - Judges will conduct some trials in prison until they toll over a program that begins here today.

The program was instituted to help dispose of cases faster and to reduce the number of defendants having to be transported to City Hall courtroom.

Judges, alternating in two-week shifts at the House of Detention, will hear cases involving defendants who have been unable to post bail and in which most of the evidence is contained in police reports.

Under the plan the defendant will be tried about 10 days after arrest.

Tolland New Books At Library

New acquisitions added to the shelves at the Tolland Public Library include both adult fiction and non-fiction books.

Adult fiction books are: "Fool's Gold," "Woman with a Gun," "Coxe; House of Gold," "Lillian; There Is No Justice," "Dominic; The Hills of Home," a Vermont Idyll, Granger.

Also, The Chandler Heritage; Haas; Six Nights a Week; Haines; The Flag Captain; Ketch; Death in a Sunny Place; Lockridge; Stay to Win; Walton; Homes from a Haunted Garden; Webb; The Minister For Justice; White; Listen for a Whisper; Whitney; Fisherman's Luck; Pace; and Mutant 89, the Plastic Eggs, Redler.

Adult non-fiction books include: "From Reconstruction to Revolution; the Black Struggle for Equality; Alvarez; Five Black Lives; The Negroes About Leemo; the Adventures of a Puma; Brock; Roman Catholicism; Ballou; Walk Book, the Connecticut Forest and Park Assoc.

Also, "The Way It Is; Flood; Pun with Ballet; Freeman; Border Kibbutz; Gorkin; Age of the Earth; The World of the Future; Prospects of American Foreign Policy; Kibbutz; German meadows are eligible to receive this innocuous form of charge.

Appointments should be made with the Public Health Department by calling the Public Health Nurse, Mrs. Joanne Kilgore at her office in the Town Hall.

Manchester Evening Herald Tolland correspondent Barbara Farick, tel. 844-8274.

Discovery! The Search for Arabian Oil, Stegner; MacArthur, Whitner; invitation to join a Personal Story, Whitney; Woodall's Trailing Paria and Campgrounds, Wood; Carol for the Twelve Days, Young.

Also, two U.S. Department of Interior publications, "It's Your World, The Grassroots Conservation Story and Quest for Quality."

SNOWMOBILE NOTES The Tolland Snowmobiler's Inc. are winding up their first year with the scheduling of three activities this month.

South Windsor Council To Schedule Three Public Hearings

At the Town Council's meeting tonight three public hearings will be established and a panel will discuss and consider a public petition from J.B. Kohos Jr. and Ann M. Kohos about the extension water lines from Nutmeg Rd. off Vermont Idyll, Granger.

The meeting will be held at 8 p.m. at the Town Hall. The public hearing dates and times include one for the recommended Board of Education budget, the recommended general government budget and the fixing of terms of office for the Registrar of Voters.

The meeting will be held at 8 p.m. at the Town Hall. The public hearing dates and times include one for the recommended Board of Education budget, the recommended general government budget and the fixing of terms of office for the Registrar of Voters.

The meeting will be held at 8 p.m. at the Town Hall. The public hearing dates and times include one for the recommended Board of Education budget, the recommended general government budget and the fixing of terms of office for the Registrar of Voters.

The meeting will be held at 8 p.m. at the Town Hall. The public hearing dates and times include one for the recommended Board of Education budget, the recommended general government budget and the fixing of terms of office for the Registrar of Voters.

The meeting will be held at 8 p.m. at the Town Hall. The public hearing dates and times include one for the recommended Board of Education budget, the recommended general government budget and the fixing of terms of office for the Registrar of Voters.

The meeting will be held at 8 p.m. at the Town Hall. The public hearing dates and times include one for the recommended Board of Education budget, the recommended general government budget and the fixing of terms of office for the Registrar of Voters.

The meeting will be held at 8 p.m. at the Town Hall. The public hearing dates and times include one for the recommended Board of Education budget, the recommended general government budget and the fixing of terms of office for the Registrar of Voters.

The meeting will be held at 8 p.m. at the Town Hall. The public hearing dates and times include one for the recommended Board of Education budget, the recommended general government budget and the fixing of terms of office for the Registrar of Voters.

The meeting will be held at 8 p.m. at the Town Hall. The public hearing dates and times include one for the recommended Board of Education budget, the recommended general government budget and the fixing of terms of office for the Registrar of Voters.

Coventry Town Completing Plans For English Visitors

The Town Council is busy has scheduled a meeting to wrapping up final arrangements for the visit of the Lord and Lady Mayor of Coventry, England, who will be here for a horse on his property, as a three-day visit starting April 10.

Plans for a dinner honoring officials of the English city to allow a storage trailer temporarily in company-owned land on South St.

The Town Council will meet tonight at 7:30 at the Town Hall. Items on the agenda include an explanation of the 1972-73 police budget, replacement procedures for full-time police department personnel, the building department report on his inspection of the Town Hall, the condition of town bridges and a report on the dam at the south end of Coventry Lake.

Boys Club Formed Coventry boosters, in an organizational meeting last week, started the Coventry Paddlers, Prop and Ball Club. Temporary officers have been elected, with Henry Grabowski as President; Virginia Grabowski, secretary; and Mary Jane Mazer, treasurer.

A by-laws committee has been organized, consisting of the temporary officers, with Roger Barrett, Richard Dibble, and Kenneth Gibbs.

The purpose of the organization is to promote safety and organize boosters toward improvement of Coventry Lake as a recreational source.

All interested boosters are invited to attend the next meeting of the club, which will be held on April 25 at 7:30 p.m. at the Grabowski home, Woodland Rd.

Delinquent Tax Notices Tax Collector Audrey Bray has reported that she is today mailing out about 1000 warnings on motor vehicle and personal property taxes, with another 75 scheduled to be mailed next week.

Mrs. Bray said that unless tax payment is received at her office on or before the date specified on the warning, or unless other arrangements are made, the warnings will be processed and turned over to the sheriff for collection.

"Enforced collection means more money owed by the taxpayer," said Mrs. Bray.

A Common Problem

DUBLIN (AP) - Dr. John Stack, director of the Child Guidance Clinic in Dublin, says depression in children is common, even from early infancy.

Infants, he says, can become depressed because of environmental factors, such as a small child living with a depressed mother.

Stack says that depression in children is common, even from early infancy. Infants, he says, can become depressed because of environmental factors, such as a small child living with a depressed mother.

Stack says that depression in children is common, even from early infancy. Infants, he says, can become depressed because of environmental factors, such as a small child living with a depressed mother.

Stack says that depression in children is common, even from early infancy. Infants, he says, can become depressed because of environmental factors, such as a small child living with a depressed mother.

Stack says that depression in children is common, even from early infancy. Infants, he says, can become depressed because of environmental factors, such as a small child living with a depressed mother.

Stack says that depression in children is common, even from early infancy. Infants, he says, can become depressed because of environmental factors, such as a small child living with a depressed mother.

Stack says that depression in children is common, even from early infancy. Infants, he says, can become depressed because of environmental factors, such as a small child living with a depressed mother.

Stack says that depression in children is common, even from early infancy. Infants, he says, can become depressed because of environmental factors, such as a small child living with a depressed mother.

Stack says that depression in children is common, even from early infancy. Infants, he says, can become depressed because of environmental factors, such as a small child living with a depressed mother.

GROSSMAN'S PINE & CENTER STREET, MANCHESTER, CONN. NEW STORE HOURS MON. - THURS. - FRI. 8 A.M. - 9 P.M. TUES. - WED. - SAT. 8 A.M. - 5:30 P.M.

more You get a good deal with gas. Yours. A gas heat conversion plan with install-now-pay-in-October convenience.

Health & Beauty Aids Caldor Baby Aspirin .24 St. Joseph's Prell Shampoo .84 Scope Mouthwash .89 Tampax 40's 1.19 Gadget Bonanza! Your Choice 3 FOR 1 Malibu Barbie or Francie 1.88 Shaker Makers 3.44 Hot Birds Sky Command Set 7.77 Proctor-Silex 9 Cup Glass Automatic Percolator 8.44 G. E. Electric Slicing Knife 8.70 Fireplaces Equipment 4.89 4.99 3.14 Electric Digital Alarm Clock 9.88 Dia Bud Simulated Diamonds \$33 per carat Playtex Living Gloves plus Bucket of Sponges* 87¢ Phillips Tips - Box of 50 Cigars 1.87 Schraff's Thin Mints 37¢ Windshield Washer, Cleaner & Solvent \$66 General Electric Sealed Beams \$88 Largest Selection of Original Cool Ray Polaroid Sun Glasses 93¢ to 6.19



WINF 13
RADIO
CBS

Genovesi Wants Cyclists Excluded from No-Fault

Manchester State Rep. Donald Genovesi today called attention to the possible plight of motorcycle riders under a proposed "No-Fault" plan to be considered by the General Assembly. In a statement today to the legislature's joint committee on insurance and judiciary he asked that motorcycles be excluded from the proposal. "I consider it unfair," he said.

Genovesi, the ranking minority member on the insurance committee and an insurance man himself, said, "Including motorcycles in our 'No-Fault' plan would be unrealistic and a flagrant disregard of the unusual characteristics of motorcycles and motorcycle insurance. We run the risk of leaving thousands of our residents (motorcyclists) with the prospect of being unable to afford coverage and of being threatened with a Class B misdemeanor if they continue to drive."

About Town

He said that in Delaware, the only state where motorcycle insurance rates for motorcycles are included under "No-Fault," night at 8 at the John F. Tier Insurance rates for motorcycle riders jumped dramatically from \$30 to \$900, "making it prohibitive to continue driving."

"Almost all motorcycle insurance," Genovesi explained, "is written by special companies—those specializing in the use of motorcycles. The directors should be prepared for the remarks and questions for a crowd which in the past has been as large as 500. The directors met Saturday afternoon with Town Manager Robert Weiss to review the budget in preparation for the hearing. Mayor John Thompson said that both parties were invited to the working session in keeping with the Democratic majority's election pledge to include both parties in the budget-making procedure.

COEP Students To Produce Radio Show

Manchester High School Cooperative Occupational Education Program students confer in preparation for the introduction of "Touchstone," their radio program on WINF of music, news, and special bulletins of interest to area youth. Target date for the premiere of the weekly Saturday broadcast from noon to 1 p.m. is May 6. From left, Ray Berthiaume, news and special bulletins director and

Mighty Jet Force Ready for Enemy

(Continued from Page One) that retreated Sunday reversed itself and moved north again. Jensen said there had been no serious attempts by the North Vietnamese to cross the river so far. A few small units tried it Sunday night and took casualties. While the line appeared to stabilize at Dong Ha, at least 10 miles below the DMZ, South Vietnamese pilots reported destroyed 10 tanks Sunday and another today. Scores of North Vietnamese tanks were reported to have crossed the frontier, but their advance was blocked by a blown-out bridge at Dong Ha, 10 miles below the DMZ. South Vietnamese pilots reported destroyed 10 tanks Sunday and another today. Scores of North Vietnamese tanks were reported to have crossed the frontier, but their advance was blocked by a blown-out bridge at Dong Ha, 10 miles below the DMZ. South Vietnamese pilots reported destroyed 10 tanks Sunday and another today. Scores of North Vietnamese tanks were reported to have crossed the frontier, but their advance was blocked by a blown-out bridge at Dong Ha, 10 miles below the DMZ.

'Mouse' Drive Raises \$121

"Send a Mouse to College," the drive conducted recently in Hilling Junior High School Grades 7 and 8, resulted in contributions of \$121.05. The money will be turned over to the American Cancer Society and the Manchester Unit of the American Cancer Society and the Manchester Unit of the American Cancer Society and the Manchester Unit of the American Cancer Society.

Town Patrolman Leaving Force

Patrolman Russell O. Schofield has submitted his resignation from the police force effective April 14, for personal reasons. Police Chief James Reardon said today. Schofield, of 13 Park St., has been on the force since March 1970, Reardon said.

Women's Home League of the Salvation Army Will Meet

The Women's Home League of the Salvation Army will meet tomorrow at 1:30 p.m. at the Junior Hall of the Citadel. Mrs. Brig. George Simons will conduct the worship service. Hostess will be Mrs. Annie Russell.

COMPLETE INSURANCE SERVICE

REAL ESTATE

ROBERT J. SMITH, INC.
INSURANSMITHS SINCE 1914
649-5241
963 MAIN STREET, MANCHESTER
(Ground Floor Next to Home & Hale)

Budget Hearing Tonight at 8

The Board of Directors will the amount (\$10.1 million) it allocate for education. Concerned Citizens for Better Education report they have been stumping to get people to hear public comments on Town Manager Robert Weiss's proposed \$17,134,558 town budget at and \$2 mill tax rate for the 1972-73 fiscal year.

The directors will have until May 9 to consider tonight's hearing. He comments and budget questions for a crowd which in the past has been as large as 500. The directors met Saturday afternoon with Town Manager Robert Weiss to review the budget in preparation for the hearing. Mayor John Thompson said that both parties were invited to the working session in keeping with the Democratic majority's election pledge to include both parties in the budget-making procedure.

Manchester Chapter, SPEBBQSA, will rehearse to-holds true, there will be two night at 8 at the Army, and forces there tonight to force, Navy Club. The rehearsals are those who think Weiss's budget open to all men interested in is too high and those who think singing barbershop-style hat is too little, particularly in money.

You've got the world on a string and a chicken in the pot



with an extension phone in your kitchen.

Bring all the children

- No appointment necessary
- Limits: One per child
- Groups taken at 99¢ per child
- Agree: Four weeks through fourteen years
- Additional prints available at reasonable prices
- Chosen from finished, natural portraits... not props
- Professional photographers, equipment and materials

99¢ (plus 50¢ handling)

Sears

"Shop Your Nearest Sears Store"

PHOTOGRAPHERS HOURS:
Manchester: Wed. 10 A.M. to 6 P.M., Sat. 10 A.M. to 1 P.M., Sun. 10 A.M. to 5 P.M.
Middletown: Daily 10 A.M. to 6 P.M., Sat. 10 A.M. to 1 P.M., Sun. 10 A.M. to 5 P.M.

NOW OPEN GENERIS RESTAURANT

550 EAST MIDDLE TURNPIKE

Serving... BREAKFAST LUNCH DINNER (ANYTIME)

OPEN DAILY 5 A.M. - 8 P.M. CLOSED SUNDAYS

Above interior view of the newly remodeled Generis Restaurant designed to enhance your eating pleasure. Left—Your friendly servants, left to right, Thomas Generis, Pamela Generis, Dick Lewis, Anna Mae Ogren.

Vernon Five Changes Considered in Pension Regulations

The Pension Board has approved five changes in the town's pension regulations, among them a provision that town employees must have worked for the town for 10 years before they are eligible for early retirement. The approved changes must now be approved by the Board of Directors, according to Thomas Rollison, Pension Board secretary.

At a recent meeting of the board, some concern over the possibility of people employed by the town under the emergency employment program being eligible to early retire was voiced by board members. Other changes the board approved include: 1. Making policemen eligible to retire at age 55. Before this change, the pension regulations said a policeman at age 55 with 25 years of service could retire. This change is designed to provide the option of retiring to those who join the department at a late age and would not have served for 25 years by their 55th birthday.

About Town

The meeting of the board of trustees of Little Jack Museum scheduled for tonight at the museum has been postponed until April 10.

The Civitan Club of Manchester will meet tomorrow at 12:15 p.m. at the West Side Rec and is open to all interested women. The craft for tomorrow is decoupage. Those planning to attend should bring wood plaques, a print, glue, varnish, paint roller, and candle.

Manchester Meat Center

"WHERE THE QUALITY IS THE BEST"

290 Green Rd., Manchester (Formerly Miller's Pharm.)

OPEN 7 DAYS EVERY WEEK!

Phone 648-9848 • PLENTY OF FREE PARKING

TUESDAY ONLY!

U.S.D.A. Cube Steaks \$1.19

CUT FROM ROUND (3 lb. Limit)
(We Reserve the Right to Limit Quantity)

WANTED
Clean, Late Model USED CARS
Top Prices Paid For All Makes!
CARTER CHEVROLET CO., INC.
1229 Main St.
Phone 648-6464

Sears ONLY 5 DAYS STARTING TUESDAY APRIL 4th thru APRIL 9th

an 8"x10" portrait of your child in **Majestic LIVING COLOR**

Bring all the children

99¢ (plus 50¢ handling)

Sears

"Shop Your Nearest Sears Store"

PHOTOGRAPHERS HOURS:
Manchester: Wed. 10 A.M. to 6 P.M., Sat. 10 A.M. to 1 P.M., Sun. 10 A.M. to 5 P.M.
Middletown: Daily 10 A.M. to 6 P.M., Sat. 10 A.M. to 1 P.M., Sun. 10 A.M. to 5 P.M.

BRING THESE COUPONS TO ANY SUPER SERVICE PHARMACY

SALE ENDS APRIL 11

Wella Care Herbal Shampoo
4 oz. \$1.60
Reg. 2.00

ASPERGUM
CHERRY OR ORANGE FLAVOR
100s .38
Reg. .49
60s .80
Reg. 1.00
WITH THIS COUPON

JERGENS LOTION
15 oz. 1.35
Reg. 1.69
JERGENS EXTRA DRY
15 oz. 1.60
Reg. 2.00
WITH THIS COUPON

DIAL ANTI-PERSPIRANT
9 oz. \$1.43
Reg. 1.79
WITH THIS COUPON

VO-5 HAIRSPRAY
Super HYPER, Reg., Gray, HYPER
8 oz. .71
Reg. .80
16 oz. 1.88
Reg. 2.35
9 oz. 1.20
Reg. 1.50
WITH THIS COUPON

BUFFERIN 225s
225s \$2.64
Reg. 3.80
WITH THIS COUPON

RIGHT GUARD DEODORANT
7 oz. \$1.27
Reg. 1.59
WITH THIS COUPON

Wella Balsam
8 oz. .87
Reg. 1.09
16 oz. 2.38
Reg. 2.98

ST. JOSEPH ASPIRIN FOR CHILDREN
SENTIBY LOCK-CAP
500s .34
Reg. .45
WITH THIS COUPON

TAMPAX
Regular, Super or Juniors
40s 1.54
Reg. 1.88
WITH THIS COUPON

VO-5 NATURAL ONE
Regular and Extra Control
7 oz. 1.19
Reg. 1.49
11 oz. 1.51
Reg. 1.80
WITH THIS COUPON

STRIDEX MEDICATED PADS
42s .85
Reg. 1.08
75s 1.28
Reg. 1.60
WITH THIS COUPON

BUFFERIN 60s
60s 94¢
Reg. 1.17
WITH THIS COUPON

RIGHT GUARD FOOT DEODORANT
6 oz. 1.19
Reg. 1.49
9 oz. 1.51
Reg. 1.89
13 oz. 1.99
Reg. 2.49
WITH THIS COUPON

Soft & Dri
NON-STING ANTI-PERSPIRANT

TAMPAX
NEW
RIGHT GUARD foot guard
THE FIRST FAMILY FOOT DEODORANT

helps keep feet comfortably dry and odor free

max™ DRYER, STYLER
COMPLETE WITH COMB AND STYLING BOOKLET
ONLY \$7.95 WITH PROOF OF S&P/DH PURCHASES

AVON
TOWPATN PHARMACY
155 W. Main Street
BETHL
STAW'S PHARMACY
1023 Elm Street
BLOOMFIELD
GRUB CITY
774 9th Avenue
ROCKWELL PHARMACY
1023 Elm Street
BRISTOL PHARMACY
637 Farmington Avenue
EAST HARTFORD
ELM PHARMACY
129 Burdette Street
THE GRAY DRUG CO.
112 Main Street

PAT'S MEDICAL PHARMACY
1001 Main Street
EAST WINDSOR
DAVID'S PHARMACY
Main Street
ELMWOOD INC.
112 New Britain Avenue
FAIRFIELD
LEE DRUG OF
ELMWOOD INC.
112 New Britain Avenue
GASTONBURY
1420 Post Rd.
TOWNE PHARMACY
202 Farmington Avenue

GRA 57
GRANBY PHARMACY
9 Hartford Ave.
HARTFORD
BROOKSIDE DRUGSTORE
412 New Britain Avenue
FORSTER HEIGHTS
641 New Britain Ave.
FREEMAN DRUG CO.
932 Main Street
KAZARIAN PHARMACY
478 Farmington Ave.
MANDELL'S PHARMACY
202 Farmington Avenue
THOMAS PHARMACY
903 Capitol Ave.

REMNINGTON
FERNDALE L'BUG INC.
41 Cranston Street
MIDDLETOWN
PELTON'S DRUG STORE
106 Main Street
WOODWARD DRUG
Middletown Shopping Plaza
483 New Britain Avenue
NEW BRITAIN
AXEL ROD PHARMACY
59 Windsor Avenue
THOMAS
LINCOLN DRUG
285 Elm Street
MILLER'S PHARMACY
3272 Capitol Avenue
ELM HILL DRUG
460 Northrup Ave.

NIANTIC'S PHARMACY
317 Park Avenue
ROCKY HILL
PATTEN DRUG
204 State Street
WETHERSFIELD
FABIAN DRUG
59 Windsor Avenue
SOUTHINGTON
OXLEY'S DRUG STORE
Cor. Main & Center St.
THOMAS
J. C. PHARMACY
78 Main Street
NANGLES PHARMACY
191 Main Street
HARTFORD
KOTTENHOFF DRUG
1007 Farmington Avenue

PARK LANE PHARMACY
WAPPING
FRANK'S PHARMACY
283 Colville Ave.
WETHERSFIELD
SAUL'S PRESCRIPTION CENTRE
66 Connecticut Road
WILSON
WILSON DRUG
283 Windsor Ave.
WINSTON LOCKS
CHARLAWAY'S PHARMACY
78 Main Street
WINSTED
CITY PHARMACY INC.
118 Main Street

Tolland High School Starts Self-Evaluation

Tolland High School is undergoing a self-evaluation program as a probe to the formal accreditation procedures established by the NEACS (New England Association of Colleges and Secondary Schools).

As a result of the self-evaluation work, the high school will operate on half day sessions April 5 and 19 and May 10 and 24, according to Richard Olson, principal of the school.

The establishment of Tolland High School as a fully functioning four-year institution marks the occasion of the school's application to the NEACS for admission as an accredited institution. The local school graduated its first senior class last year, becoming eligible for accreditation.

Admission to the NEACS "is of extreme importance to our students," Olson explains. "The accreditation departments in selecting their students weigh heavily the student's high school and its accreditation status."

Admission to the NEACS requires that each school undergo an evaluation program by the organization, according to Olson.

In preparation for the visitation by the evaluating committee, which will take place in the 1972-73 school year, the high school faculty is presently undergoing a self-evaluating program as required by the NEACS.

Teachers will have to meet in workshop sessions in order to complete this self-evaluating process before the end of the year, prompting the calling of the four half day sessions.

The high school will discontinue classes at 11:30 on the four dates, "providing time for the producing of an accurate and comprehensive account of our educational program to the regional evaluators," Olson maintains.

Scholarship Drive

The Tolland High School Scholarship Fund Drive will be launched Saturday by students at the high school.

Students in the school's graphic arts department have printed 3,000 flyers to advertise the street by street canvass.

A special committee has been formed to contact business and professional men in town under the direction of Dr. Fred Freese, William Summers, Donald Morrison and Howard Wolfanger.

In addition, students at the high school will be collecting used telephone books for recycling at two cents per book, with the income to be donated to the scholarship fund.

School Lunches

Lunches at Meadowbrook, Hicks Memorial and the Middle School this week are: Tuesday, sloppy Joe on roll, potato chips, parmesan carrots, celery sticks, peaches.

Wednesday, spaghetti with meat sauce, green beans, cheese cube, homemade Vienna bread and butter, jello with fruit.

Thursday, hamburger on roll, french fries, corn, pickle salad, fruit crisp.

Friday, soup, cheese, lettuce on rye bread, peanut butter and jolly sandwich, fruit.

High school lunches this week are: Tuesday, jicy, sloppy Joe; Wednesday, spaghetti with meat sauce, green beans, cheese cube, homemade Vienna bread and butter, jello with fruit; Thursday, hamburger on roll, french fries, corn, pickle salad, fruit crisp; Friday, soup, cheese, lettuce on rye bread, peanut butter and jolly sandwich, fruit.

The Tolland Historical Society will hold an open meeting to-night at 8 in the sanctuary of the Tolland Congregational Church. George Mackie, special assistant of the American Historical Commission of Connecticut, will describe the possible development of a community wide observance to celebrate the 200th anniversary of the United States on July 4, 1976. A business meeting will precede the regular meeting at 7:30 in the church Religious Education Building.

Atty. Robert Satter will explain the details of the U.S. District Court order which proposed restricting plan for the general assembly, during to-night's meeting of the Tolland County Democratic Association at 8 p.m. in the Tolland High School library.

Representatives of the Democratic Central Committee in seeking the court action.

The public hearing on the \$2,786,000 Board of Education budget will be held tomorrow night at 8 p.m. at the Hicks Memorial School gym. First Selectman Edwin Stoetzer has urged residents to attend both public hearings on the school budget and the general government budget and to voice their opinions on the requests, prior to the completion of a budget to be presented at the annual town meeting.

The Tolland Grange will meet tomorrow night at 8 in the Grange Hall.

Manchester Hospital Notes

VISITING HOURS
Intermediate Care Semi-private, noon - 2 p.m., and 4 p.m. - 8 p.m.; 2 p.m. - 8 p.m.; 4 p.m. - 8 p.m.

Self Service: 10 a.m. - 2 p.m.

Podiatry: Parents allowed any time except noon-2 p.m.; others, 9 a.m. - 4 p.m.

Intensive Care and Coronary Care: Immediate family only, any time, limited to five min. visits.

Maternity: Fathers, 11 a.m. - 12:45 p.m., and 6:30 p.m. - 8 p.m.; others, 3 p.m. - 4 p.m.

Age Limits: 16 in maternity; 12 in other areas, no limit in self-service.

All emergency patients and outpatients are requested to use the new emergency room entrance off Arroyo St. Access to the entrance is via existing driveways.

ADMITTED YESTERDAY: Mrs. Janice M. Barre, Plainville; Benjamin Beemer, East Hartford; William Hixby Jr., 88 North St.; Leonard Bonville, RR4, Coventry; Mrs. Nelle Bradley, 44 Greenwood Dr.; Mrs. John Estelle Wilson, 190 Cedar Ridge Ter., Glastonbury; Greenwood Dr.; Catherine A. Cooke, East Hartford; Omar G. Cole, Jim Dr., Rockville; Douglas L. Curry, 95 W. Middle Tpke.

ADMITTED SATURDAY: Mrs. Gertrude Belliveau, New Britain; Charles Eugene Bergeron Jr., Merrow, Albert H. Blai, 1919 Hebron Ave., Glastonbury; George J. Canessa, East Hartford; Mrs. Pearl S. Daley, 1 Sunset Lane, Andover;

ADMITTED SATURDAY: Mrs. Gertrude Belliveau, New Britain; Charles Eugene Bergeron Jr., Merrow, Albert H. Blai, 1919 Hebron Ave., Glastonbury; George J. Canessa, East Hartford; Mrs. Pearl S. Daley, 1 Sunset Lane, Andover;

ADMITTED SATURDAY: Mrs. Gertrude Belliveau, New Britain; Charles Eugene Bergeron Jr., Merrow, Albert H. Blai, 1919 Hebron Ave., Glastonbury; George J. Canessa, East Hartford; Mrs. Pearl S. Daley, 1 Sunset Lane, Andover;

ADMITTED SATURDAY: Mrs. Gertrude Belliveau, New Britain; Charles Eugene Bergeron Jr., Merrow, Albert H. Blai, 1919 Hebron Ave., Glastonbury; George J. Canessa, East Hartford; Mrs. Pearl S. Daley, 1 Sunset Lane, Andover;

ADMITTED SATURDAY: Mrs. Gertrude Belliveau, New Britain; Charles Eugene Bergeron Jr., Merrow, Albert H. Blai, 1919 Hebron Ave., Glastonbury; George J. Canessa, East Hartford; Mrs. Pearl S. Daley, 1 Sunset Lane, Andover;

ADMITTED SATURDAY: Mrs. Gertrude Belliveau, New Britain; Charles Eugene Bergeron Jr., Merrow, Albert H. Blai, 1919 Hebron Ave., Glastonbury; George J. Canessa, East Hartford; Mrs. Pearl S. Daley, 1 Sunset Lane, Andover;

ADMITTED SATURDAY: Mrs. Gertrude Belliveau, New Britain; Charles Eugene Bergeron Jr., Merrow, Albert H. Blai, 1919 Hebron Ave., Glastonbury; George J. Canessa, East Hartford; Mrs. Pearl S. Daley, 1 Sunset Lane, Andover;

ADMITTED SATURDAY: Mrs. Gertrude Belliveau, New Britain; Charles Eugene Bergeron Jr., Merrow, Albert H. Blai, 1919 Hebron Ave., Glastonbury; George J. Canessa, East Hartford; Mrs. Pearl S. Daley, 1 Sunset Lane, Andover;

ADMITTED SATURDAY: Mrs. Gertrude Belliveau, New Britain; Charles Eugene Bergeron Jr., Merrow, Albert H. Blai, 1919 Hebron Ave., Glastonbury; George J. Canessa, East Hartford; Mrs. Pearl S. Daley, 1 Sunset Lane, Andover;

ADMITTED SATURDAY: Mrs. Gertrude Belliveau, New Britain; Charles Eugene Bergeron Jr., Merrow, Albert H. Blai, 1919 Hebron Ave., Glastonbury; George J. Canessa, East Hartford; Mrs. Pearl S. Daley, 1 Sunset Lane, Andover;

ADMITTED SATURDAY: Mrs. Gertrude Belliveau, New Britain; Charles Eugene Bergeron Jr., Merrow, Albert H. Blai, 1919 Hebron Ave., Glastonbury; George J. Canessa, East Hartford; Mrs. Pearl S. Daley, 1 Sunset Lane, Andover;

ADMITTED SATURDAY: Mrs. Gertrude Belliveau, New Britain; Charles Eugene Bergeron Jr., Merrow, Albert H. Blai, 1919 Hebron Ave., Glastonbury; George J. Canessa, East Hartford; Mrs. Pearl S. Daley, 1 Sunset Lane, Andover;

ADMITTED SATURDAY: Mrs. Gertrude Belliveau, New Britain; Charles Eugene Bergeron Jr., Merrow, Albert H. Blai, 1919 Hebron Ave., Glastonbury; George J. Canessa, East Hartford; Mrs. Pearl S. Daley, 1 Sunset Lane, Andover;

ADMITTED SATURDAY: Mrs. Gertrude Belliveau, New Britain; Charles Eugene Bergeron Jr., Merrow, Albert H. Blai, 1919 Hebron Ave., Glastonbury; George J. Canessa, East Hartford; Mrs. Pearl S. Daley, 1 Sunset Lane, Andover;

ADMITTED SATURDAY: Mrs. Gertrude Belliveau, New Britain; Charles Eugene Bergeron Jr., Merrow, Albert H. Blai, 1919 Hebron Ave., Glastonbury; George J. Canessa, East Hartford; Mrs. Pearl S. Daley, 1 Sunset Lane, Andover;

ADMITTED SATURDAY: Mrs. Gertrude Belliveau, New Britain; Charles Eugene Bergeron Jr., Merrow, Albert H. Blai, 1919 Hebron Ave., Glastonbury; George J. Canessa, East Hartford; Mrs. Pearl S. Daley, 1 Sunset Lane, Andover;

ADMITTED SATURDAY: Mrs. Gertrude Belliveau, New Britain; Charles Eugene Bergeron Jr., Merrow, Albert H. Blai, 1919 Hebron Ave., Glastonbury; George J. Canessa, East Hartford; Mrs. Pearl S. Daley, 1 Sunset Lane, Andover;

ADMITTED SATURDAY: Mrs. Gertrude Belliveau, New Britain; Charles Eugene Bergeron Jr., Merrow, Albert H. Blai, 1919 Hebron Ave., Glastonbury; George J. Canessa, East Hartford; Mrs. Pearl S. Daley, 1 Sunset Lane, Andover;

ADMITTED SATURDAY: Mrs. Gertrude Belliveau, New Britain; Charles Eugene Bergeron Jr., Merrow, Albert H. Blai, 1919 Hebron Ave., Glastonbury; George J. Canessa, East Hartford; Mrs. Pearl S. Daley, 1 Sunset Lane, Andover;

ADMITTED SATURDAY: Mrs. Gertrude Belliveau, New Britain; Charles Eugene Bergeron Jr., Merrow, Albert H. Blai, 1919 Hebron Ave., Glastonbury; George J. Canessa, East Hartford; Mrs. Pearl S. Daley, 1 Sunset Lane, Andover;

ADMITTED SATURDAY: Mrs. Gertrude Belliveau, New Britain; Charles Eugene Bergeron Jr., Merrow, Albert H. Blai, 1919 Hebron Ave., Glastonbury; George J. Canessa, East Hartford; Mrs. Pearl S. Daley, 1 Sunset Lane, Andover;

ADMITTED SATURDAY: Mrs. Gertrude Belliveau, New Britain; Charles Eugene Bergeron Jr., Merrow, Albert H. Blai, 1919 Hebron Ave., Glastonbury; George J. Canessa, East Hartford; Mrs. Pearl S. Daley, 1 Sunset Lane, Andover;

ADMITTED SATURDAY: Mrs. Gertrude Belliveau, New Britain; Charles Eugene Bergeron Jr., Merrow, Albert H. Blai, 1919 Hebron Ave., Glastonbury; George J. Canessa, East Hartford; Mrs. Pearl S. Daley, 1 Sunset Lane, Andover;

ADMITTED SATURDAY: Mrs. Gertrude Belliveau, New Britain; Charles Eugene Bergeron Jr., Merrow, Albert H. Blai, 1919 Hebron Ave., Glastonbury; George J. Canessa, East Hartford; Mrs. Pearl S. Daley, 1 Sunset Lane, Andover;

ADMITTED SATURDAY: Mrs. Gertrude Belliveau, New Britain; Charles Eugene Bergeron Jr., Merrow, Albert H. Blai, 1919 Hebron Ave., Glastonbury; George J. Canessa, East Hartford; Mrs. Pearl S. Daley, 1 Sunset Lane, Andover;

ADMITTED SATURDAY: Mrs. Gertrude Belliveau, New Britain; Charles Eugene Bergeron Jr., Merrow, Albert H. Blai, 1919 Hebron Ave., Glastonbury; George J. Canessa, East Hartford; Mrs. Pearl S. Daley, 1 Sunset Lane, Andover;

ADMITTED SATURDAY: Mrs. Gertrude Belliveau, New Britain; Charles Eugene Bergeron Jr., Merrow, Albert H. Blai, 1919 Hebron Ave., Glastonbury; George J. Canessa, East Hartford; Mrs. Pearl S. Daley, 1 Sunset Lane, Andover;

ADMITTED SATURDAY: Mrs. Gertrude Belliveau, New Britain; Charles Eugene Bergeron Jr., Merrow, Albert H. Blai, 1919 Hebron Ave., Glastonbury; George J. Canessa, East Hartford; Mrs. Pearl S. Daley, 1 Sunset Lane, Andover;

ADMITTED SATURDAY: Mrs. Gertrude Belliveau, New Britain; Charles Eugene Bergeron Jr., Merrow, Albert H. Blai, 1919 Hebron Ave., Glastonbury; George J. Canessa, East Hartford; Mrs. Pearl S. Daley, 1 Sunset Lane, Andover;

Manchester Hospital Notes

VISITING HOURS
Intermediate Care Semi-private, noon - 2 p.m., and 4 p.m. - 8 p.m.; 2 p.m. - 8 p.m.; 4 p.m. - 8 p.m.

Self Service: 10 a.m. - 2 p.m.

Podiatry: Parents allowed any time except noon-2 p.m.; others, 9 a.m. - 4 p.m.

Intensive Care and Coronary Care: Immediate family only, any time, limited to five min. visits.

Maternity: Fathers, 11 a.m. - 12:45 p.m., and 6:30 p.m. - 8 p.m.; others, 3 p.m. - 4 p.m.

Age Limits: 16 in maternity; 12 in other areas, no limit in self-service.

All emergency patients and outpatients are requested to use the new emergency room entrance off Arroyo St. Access to the entrance is via existing driveways.

ADMITTED YESTERDAY: Mrs. Janice M. Barre, Plainville; Benjamin Beemer, East Hartford; William Hixby Jr., 88 North St.; Leonard Bonville, RR4, Coventry; Mrs. Nelle Bradley, 44 Greenwood Dr.; Mrs. John Estelle Wilson, 190 Cedar Ridge Ter., Glastonbury; Greenwood Dr.; Catherine A. Cooke, East Hartford; Omar G. Cole, Jim Dr., Rockville; Douglas L. Curry, 95 W. Middle Tpke.

ADMITTED SATURDAY: Mrs. Gertrude Belliveau, New Britain; Charles Eugene Bergeron Jr., Merrow, Albert H. Blai, 1919 Hebron Ave., Glastonbury; George J. Canessa, East Hartford; Mrs. Pearl S. Daley, 1 Sunset Lane, Andover;

ADMITTED SATURDAY: Mrs. Gertrude Belliveau, New Britain; Charles Eugene Bergeron Jr., Merrow, Albert H. Blai, 1919 Hebron Ave., Glastonbury; George J. Canessa, East Hartford; Mrs. Pearl S. Daley, 1 Sunset Lane, Andover;

ADMITTED SATURDAY: Mrs. Gertrude Belliveau, New Britain; Charles Eugene Bergeron Jr., Merrow, Albert H. Blai, 1919 Hebron Ave., Glastonbury; George J. Canessa, East Hartford; Mrs. Pearl S. Daley, 1 Sunset Lane, Andover;

ADMITTED SATURDAY: Mrs. Gertrude Belliveau, New Britain; Charles Eugene Bergeron Jr., Merrow, Albert H. Blai, 1919 Hebron Ave., Glastonbury; George J. Canessa, East Hartford; Mrs. Pearl S. Daley, 1 Sunset Lane, Andover;

ADMITTED SATURDAY: Mrs. Gertrude Belliveau, New Britain; Charles Eugene Bergeron Jr., Merrow, Albert H. Blai, 1919 Hebron Ave., Glastonbury; George J. Canessa, East Hartford; Mrs. Pearl S. Daley, 1 Sunset Lane, Andover;

ADMITTED SATURDAY: Mrs. Gertrude Belliveau, New Britain; Charles Eugene Bergeron Jr., Merrow, Albert H. Blai, 1919 Hebron Ave., Glastonbury; George J. Canessa, East Hartford; Mrs. Pearl S. Daley, 1 Sunset Lane, Andover;

ADMITTED SATURDAY: Mrs. Gertrude Belliveau, New Britain; Charles Eugene Bergeron Jr., Merrow, Albert H. Blai, 1919 Hebron Ave., Glastonbury; George J. Canessa, East Hartford; Mrs. Pearl S. Daley, 1 Sunset Lane, Andover;

ADMITTED SATURDAY: Mrs. Gertrude Belliveau, New Britain; Charles Eugene Bergeron Jr., Merrow, Albert H. Blai, 1919 Hebron Ave., Glastonbury; George J. Canessa, East Hartford; Mrs. Pearl S. Daley, 1 Sunset Lane, Andover;

ADMITTED SATURDAY: Mrs. Gertrude Belliveau, New Britain; Charles Eugene Bergeron Jr., Merrow, Albert H. Blai, 1919 Hebron Ave., Glastonbury; George J. Canessa, East Hartford; Mrs. Pearl S. Daley, 1 Sunset Lane, Andover;

ADMITTED SATURDAY: Mrs. Gertrude Belliveau, New Britain; Charles Eugene Bergeron Jr., Merrow, Albert H. Blai, 1919 Hebron Ave., Glastonbury; George J. Canessa, East Hartford; Mrs. Pearl S. Daley, 1 Sunset Lane, Andover;

ADMITTED SATURDAY: Mrs. Gertrude Belliveau, New Britain; Charles Eugene Bergeron Jr., Merrow, Albert H. Blai, 1919 Hebron Ave., Glastonbury; George J. Canessa, East Hartford; Mrs. Pearl S. Daley, 1 Sunset Lane, Andover;

ADMITTED SATURDAY: Mrs. Gertrude Belliveau, New Britain; Charles Eugene Bergeron Jr., Merrow, Albert H. Blai, 1919 Hebron Ave., Glastonbury; George J. Canessa, East Hartford; Mrs. Pearl S. Daley, 1 Sunset Lane, Andover;

ADMITTED SATURDAY: Mrs. Gertrude Belliveau, New Britain; Charles Eugene Bergeron Jr., Merrow, Albert H. Blai, 1919 Hebron Ave., Glastonbury; George J. Canessa, East Hartford; Mrs. Pearl S. Daley, 1 Sunset Lane, Andover;

ADMITTED SATURDAY: Mrs. Gertrude Belliveau, New Britain; Charles Eugene Bergeron Jr., Merrow, Albert H. Blai, 1919 Hebron Ave., Glastonbury; George J. Canessa, East Hartford; Mrs. Pearl S. Daley, 1 Sunset Lane, Andover;

ADMITTED SATURDAY: Mrs. Gertrude Belliveau, New Britain; Charles Eugene Bergeron Jr., Merrow, Albert H. Blai, 1919 Hebron Ave., Glastonbury; George J. Canessa, East Hartford; Mrs. Pearl S. Daley, 1 Sunset Lane, Andover;

ADMITTED SATURDAY: Mrs. Gertrude Belliveau, New Britain; Charles Eugene Bergeron Jr., Merrow, Albert H. Blai, 1919 Hebron Ave., Glastonbury; George J. Canessa, East Hartford; Mrs. Pearl S. Daley, 1 Sunset Lane, Andover;

ADMITTED SATURDAY: Mrs. Gertrude Belliveau, New Britain; Charles Eugene Bergeron Jr., Merrow, Albert H. Blai, 1919 Hebron Ave., Glastonbury; George J. Canessa, East Hartford; Mrs. Pearl S. Daley, 1 Sunset Lane, Andover;

ADMITTED SATURDAY: Mrs. Gertrude Belliveau, New Britain; Charles Eugene Bergeron Jr., Merrow, Albert H. Blai, 1919 Hebron Ave., Glastonbury; George J. Canessa, East Hartford; Mrs. Pearl S. Daley, 1 Sunset Lane, Andover;

ADMITTED SATURDAY: Mrs. Gertrude Belliveau, New Britain; Charles Eugene Bergeron Jr., Merrow, Albert H. Blai, 1919 Hebron Ave., Glastonbury; George J. Canessa, East Hartford; Mrs. Pearl S. Daley, 1 Sunset Lane, Andover;

ADMITTED SATURDAY: Mrs. Gertrude Belliveau, New Britain; Charles Eugene Bergeron Jr., Merrow, Albert H. Blai, 1919 Hebron Ave., Glastonbury; George J. Canessa, East Hartford; Mrs. Pearl S. Daley, 1 Sunset Lane, Andover;

ADMITTED SATURDAY: Mrs. Gertrude Belliveau, New Britain; Charles Eugene Bergeron Jr., Merrow, Albert H. Blai, 1919 Hebron Ave., Glastonbury; George J. Canessa, East Hartford; Mrs. Pearl S. Daley, 1 Sunset Lane, Andover;

ADMITTED SATURDAY: Mrs. Gertrude Belliveau, New Britain; Charles Eugene Bergeron Jr., Merrow, Albert H. Blai, 1919 Hebron Ave., Glastonbury; George J. Canessa, East Hartford; Mrs. Pearl S. Daley, 1 Sunset Lane, Andover;

ADMITTED SATURDAY: Mrs. Gertrude Belliveau, New Britain; Charles Eugene Bergeron Jr., Merrow, Albert H. Blai, 1919 Hebron Ave., Glastonbury; George J. Canessa, East Hartford; Mrs. Pearl S. Daley, 1 Sunset Lane, Andover;

ADMITTED SATURDAY: Mrs. Gertrude Belliveau, New Britain; Charles Eugene Bergeron Jr., Merrow, Albert H. Blai, 1919 Hebron Ave., Glastonbury; George J. Canessa, East Hartford; Mrs. Pearl S. Daley, 1 Sunset Lane, Andover;

ADMITTED SATURDAY: Mrs. Gertrude Belliveau, New Britain; Charles Eugene Bergeron Jr., Merrow, Albert H. Blai, 1919 Hebron Ave., Glastonbury; George J. Canessa, East Hartford; Mrs. Pearl S. Daley, 1 Sunset Lane, Andover;

ADMITTED SATURDAY: Mrs. Gertrude Belliveau, New Britain; Charles Eugene Bergeron Jr., Merrow, Albert H. Blai, 1919 Hebron Ave., Glastonbury; George J. Canessa, East Hartford; Mrs. Pearl S. Daley, 1 Sunset Lane, Andover;

ADMITTED SATURDAY: Mrs. Gertrude Belliveau, New Britain; Charles Eugene Bergeron Jr., Merrow, Albert H. Blai, 1919 Hebron Ave., Glastonbury; George J. Canessa, East Hartford; Mrs. Pearl S. Daley, 1 Sunset Lane, Andover;

ADMITTED SATURDAY: Mrs. Gertrude Belliveau, New Britain; Charles Eugene Bergeron Jr., Merrow, Albert H. Blai, 1919 Hebron Ave., Glastonbury; George J. Canessa, East Hartford; Mrs. Pearl S. Daley, 1 Sunset Lane, Andover;

Manchester Hospital Notes

VISITING HOURS
Intermediate Care Semi-private, noon - 2 p.m., and 4 p.m. - 8 p.m.; 2 p.m. - 8 p.m.; 4 p.m. - 8 p.m.

Self Service: 10 a.m. - 2 p.m.

Podiatry: Parents allowed any time except noon-2 p.m.; others, 9 a.m. - 4 p.m.

Intensive Care and Coronary Care: Immediate family only, any time, limited to five min. visits.

Maternity: Fathers, 11 a.m. - 12:45 p.m., and 6:30 p.m. - 8 p.m.; others, 3 p.m. - 4 p.m.

Age Limits: 16 in maternity; 12 in other areas, no limit in self-service.

All emergency patients and outpatients are requested to use the new emergency room entrance off Arroyo St. Access to the entrance is via existing driveways.

ADMITTED YESTERDAY: Mrs. Janice M. Barre, Plainville; Benjamin Beemer, East Hartford; William Hixby Jr., 88 North St.; Leonard Bonville, RR4, Coventry; Mrs. Nelle Bradley, 44 Greenwood Dr.; Mrs. John Estelle Wilson, 190 Cedar Ridge Ter., Glastonbury; Greenwood Dr.; Catherine A. Cooke, East Hartford; Omar G. Cole, Jim Dr., Rockville; Douglas L. Curry, 95 W. Middle Tpke.

ADMITTED SATURDAY: Mrs. Gertrude Belliveau, New Britain; Charles Eugene Bergeron Jr., Merrow, Albert H. Blai, 1919 Hebron Ave., Glastonbury; George J. Canessa, East Hartford; Mrs. Pearl S. Daley, 1 Sunset Lane, Andover;

ADMITTED SATURDAY: Mrs. Gertrude Belliveau, New Britain; Charles Eugene Bergeron Jr., Merrow, Albert H. Blai, 1919 Hebron Ave., Glastonbury; George J. Canessa, East Hartford; Mrs. Pearl S. Daley, 1 Sunset Lane, Andover;

ADMITTED SATURDAY: Mrs. Gertrude Belliveau, New Britain; Charles Eugene Bergeron Jr., Merrow, Albert H. Blai, 1919 Hebron Ave., Glastonbury; George J. Canessa, East Hartford; Mrs. Pearl S. Daley, 1 Sunset Lane, Andover;

ADMITTED SATURDAY: Mrs. Gertrude Belliveau, New Britain; Charles Eugene Bergeron Jr., Merrow, Albert H. Blai, 1919 Hebron Ave., Glastonbury; George J. Canessa, East Hartford; Mrs. Pearl S. Daley, 1 Sunset Lane, Andover;

ADMITTED SATURDAY: Mrs. Gertrude Belliveau, New Britain; Charles Eugene Bergeron Jr., Merrow, Albert H. Blai, 1919 Hebron Ave., Glastonbury; George J. Canessa, East Hartford; Mrs. Pearl S. Daley, 1 Sunset Lane, Andover;

ADMITTED SATURDAY: Mrs. Gertrude Belliveau, New Britain; Charles Eugene Bergeron Jr., Merrow, Albert H. Blai, 1919 Hebron Ave., Glastonbury; George J. Canessa, East Hartford; Mrs. Pearl S. Daley, 1 Sunset Lane, Andover;

ADMITTED SATURDAY: Mrs. Gertrude Belliveau, New Britain; Charles Eugene Bergeron Jr., Merrow, Albert H. Blai, 1919 Hebron Ave., Glastonbury; George J. Canessa, East Hartford; Mrs. Pearl S. Daley, 1 Sunset Lane, Andover;

ADMITTED SATURDAY: Mrs. Gertrude Belliveau, New Britain; Charles Eugene Bergeron Jr., Merrow, Albert H. Blai, 1919 Hebron Ave., Glastonbury; George J. Canessa, East Hartford; Mrs. Pearl S. Daley, 1 Sunset Lane, Andover;

ADMITTED SATURDAY: Mrs. Gertrude Belliveau, New Britain; Charles Eugene Bergeron Jr., Merrow, Albert H. Blai, 1919 Hebron Ave., Glastonbury; George J. Canessa, East Hartford; Mrs. Pearl S. Daley, 1 Sunset Lane, Andover;

ADMITTED SATURDAY: Mrs. Gertrude Belliveau, New Britain; Charles Eugene Bergeron Jr., Merrow, Albert H. Blai, 1919 Hebron Ave., Glastonbury; George J. Canessa, East Hartford; Mrs. Pearl S. Daley, 1 Sunset Lane, Andover;

ADMITTED SATURDAY: Mrs. Gertrude Belliveau, New Britain; Charles Eugene Bergeron Jr., Merrow, Albert H. Blai, 1919 Hebron Ave., Glastonbury; George J. Canessa, East Hartford; Mrs. Pearl S. Daley, 1 Sunset Lane, Andover;

ADMITTED SATURDAY: Mrs. Gertrude Belliveau, New Britain; Charles Eugene Bergeron Jr., Merrow, Albert H. Blai, 1919 Hebron Ave., Glastonbury; George J. Canessa, East Hartford; Mrs. Pearl S. Daley, 1 Sunset Lane, Andover;

ADMITTED SATURDAY: Mrs. Gertrude Belliveau, New Britain; Charles Eugene Bergeron Jr., Merrow, Albert H. Blai, 1919 Hebron Ave., Glastonbury; George J. Canessa, East Hartford; Mrs. Pearl S. Daley, 1 Sunset Lane, Andover;

ADMITTED SATURDAY: Mrs. Gertrude Belliveau, New Britain; Charles Eugene Bergeron Jr., Merrow, Albert H. Blai, 1919 Hebron Ave., Glastonbury; George J. Canessa, East Hartford; Mrs. Pearl S. Daley, 1 Sunset Lane, Andover;

ADMITTED SATURDAY: Mrs. Gertrude Belliveau, New Britain; Charles Eugene Bergeron Jr., Merrow, Albert H. Blai, 1919 Hebron Ave., Glastonbury; George J. Canessa, East Hartford; Mrs. Pearl S. Daley, 1 Sunset Lane, Andover;

ADMITTED SATURDAY: Mrs. Gertrude Belliveau, New Britain; Charles Eugene Bergeron Jr., Merrow, Albert H. Blai, 1919 Hebron Ave., Glastonbury; George J. Canessa, East Hartford; Mrs. Pearl S. Daley, 1 Sunset Lane, Andover;

ADMITTED SATURDAY: Mrs. Gertrude Belliveau, New Britain; Charles Eugene Bergeron Jr., Merrow, Albert H. Blai, 1919 Hebron Ave., Glastonbury; George J. Canessa, East Hartford; Mrs. Pearl S. Daley, 1 Sunset Lane, Andover;

ADMITTED SATURDAY: Mrs. Gertrude Belliveau, New Britain; Charles Eugene Bergeron Jr., Merrow, Albert H. Blai, 1919 Hebron Ave., Glastonbury; George J. Canessa, East Hartford; Mrs. Pearl S. Daley, 1 Sunset Lane, Andover;

ADMITTED SATURDAY: Mrs. Gertrude Belliveau, New Britain; Charles Eugene Bergeron Jr., Merrow, Albert H. Blai, 1919 Hebron Ave., Glastonbury; George J. Canessa, East Hartford; Mrs. Pearl S. Daley, 1 Sunset Lane, Andover;

ADMITTED SATURDAY: Mrs. Gertrude Belliveau, New Britain; Charles Eugene Bergeron Jr., Merrow, Albert H. Blai, 1919 Hebron Ave., Glastonbury; George J. Canessa, East Hartford; Mrs. Pearl S. Daley, 1 Sunset Lane, Andover;

ADMITTED SATURDAY: Mrs. Gertrude Belliveau, New Britain; Charles Eugene Bergeron Jr., Merrow, Albert H. Blai, 1919 Hebron Ave., Glastonbury; George J. Canessa, East Hartford; Mrs. Pearl S. Daley, 1 Sunset Lane, Andover;

ADMITTED SATURDAY: Mrs. Gertrude Belliveau, New Britain; Charles Eugene Bergeron Jr., Merrow, Albert H. Blai, 1919 Hebron Ave., Glastonbury; George J. Canessa, East Hartford; Mrs. Pearl S. Daley, 1 Sunset Lane, Andover;

ADMITTED SATURDAY: Mrs. Gertrude Belliveau, New Britain; Charles Eugene Bergeron Jr., Merrow, Albert H. Blai, 1919 Hebron Ave., Glastonbury; George J. Canessa, East Hartford; Mrs. Pearl S. Daley, 1 Sunset Lane, Andover;

ADMITTED SATURDAY: Mrs. Gertrude Belliveau, New Britain; Charles Eugene Bergeron Jr., Merrow, Albert H. Blai, 1919 Hebron Ave., Glastonbury; George J. Canessa, East Hartford; Mrs. Pearl S. Daley, 1 Sunset Lane, Andover;

ADMITTED SATURDAY: Mrs. Gertrude Belliveau, New Britain; Charles Eugene Bergeron Jr., Merrow, Albert H. Blai, 1919 Hebron Ave., Glastonbury; George J. Canessa, East Hartford; Mrs. Pearl S. Daley, 1 Sunset Lane, Andover;

ADMITTED SATURDAY: Mrs. Gertrude Belliveau, New Britain; Charles Eugene Bergeron Jr., Merrow, Albert H. Blai, 1919 Hebron Ave., Glastonbury; George J. Canessa, East Hartford; Mrs. Pearl S. Daley, 1 Sunset Lane, Andover;

ADMITTED SATURDAY: Mrs. Gertrude Belliveau, New Britain; Charles Eugene Bergeron Jr., Merrow, Albert H. Blai, 1919 Hebron Ave., Glastonbury; George J. Canessa, East Hartford; Mrs. Pearl S. Daley, 1 Sunset Lane, Andover;

ADMITTED SATURDAY: Mrs. Gertrude Belliveau, New Britain; Charles Eugene Bergeron Jr., Merrow, Albert H. Blai, 1919 Hebron Ave., Glastonbury; George J. Canessa, East Hartford; Mrs. Pearl S. Daley, 1 Sunset Lane, Andover;

Manchester Hospital Notes

VISITING HOURS
Intermediate Care Semi-private, noon - 2 p.m., and 4 p.m. - 8 p.m.; 2 p.m. - 8 p.m.; 4 p.m. - 8 p.m.

Self Service: 10 a.m. - 2 p.m.

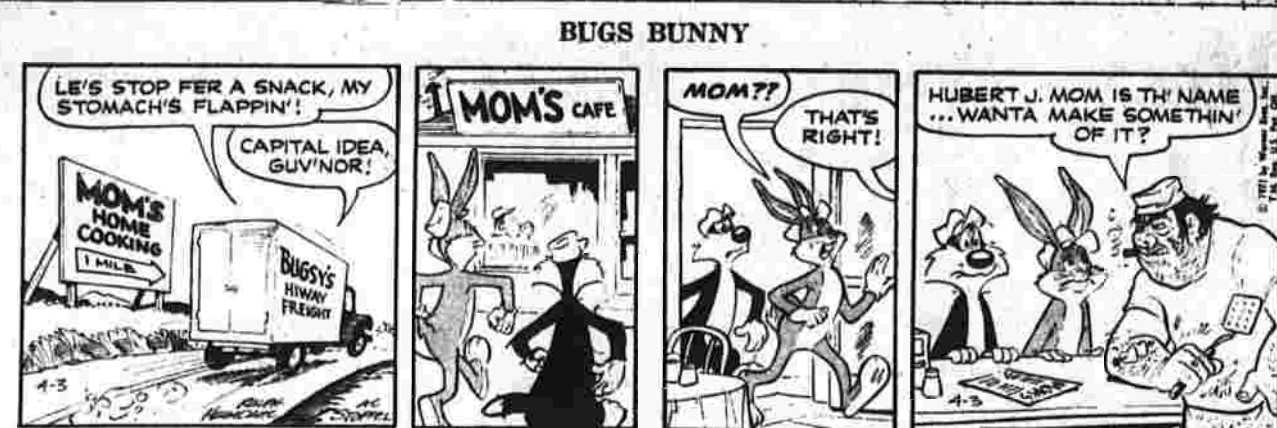
Podiatry: Parents allowed any time except noon-2 p.m.; others, 9 a.m. - 4 p.m.

Intensive Care and Coronary Care: Immediate family only, any time, limited to five min. visits.

Maternity: Fathers, 11 a.m. - 12:45 p.m., and 6:30 p.m. - 8 p.m.; others, 3 p.m. - 4 p.m.

Age Limits: 16 in maternity; 12 in other areas, no limit in self-service.

All emergency patients and outpatients are requested to use the new emergency room entrance off Arroyo St. Access to the entrance is via existing driveways.



OUR BOARDING HOUSE with MAJOR HOOPLE. A political cartoon about a group of US political scientists meeting in the White House basement.

OUT OUR WAY BY NED COCHRAN. A cartoon about a man who has been in the news for a long time.

SHORT RIBS BY FRANK O'NEAL. A cartoon about a man who has to admire President Nixon for visiting China.

WINTHROP BY DICK CAVALLI. A cartoon about a man who has a very funny idea.

PONK BY DICK CAVALLI. A cartoon about a man who has a very funny idea.

CAPTAIN EASY BY CROOKS & LAWRENCE. A cartoon about a man who has a very funny idea.

STEVE CANYON BY MILTON CANIFF. A cartoon about a man who has a very funny idea.

LITTLE SPORTS BY ROUSON. A cartoon about a man who has a very funny idea.

BY ROUSON. A cartoon about a man who has a very funny idea.

Wild West. A crossword puzzle with clues related to the Wild West.

HERALD BOX LETTERS. A section for readers to write letters to the editor.

Automobiles For Sale 4. A list of cars for sale with details on price and features.

Trucks - Tractors 5. A list of trucks and tractors for sale.

Trailers - Mobile Homes 6-A. A list of trailers and mobile homes for sale.

Motorcycles - Bicycles 11. A list of motorcycles and bicycles for sale.

Business Services 13. A list of various business services available.

Articles For Sale 45. A list of various items for sale.

Classified ads get the job done

BERRY'S WORLD. An advertisement for a car wash or detailing service.

Business Services 13. A list of business services.

Roofing - Siding 16. An advertisement for roofing and siding services.

Roofing and Chimneys 16-A. An advertisement for roofing and chimney services.

Heating and Plumbing 17. An advertisement for heating and plumbing services.

Millinery, Dressmaking 19. An advertisement for millinery and dressmaking services.

Painting - Papering 21. An advertisement for painting and papering services.

Articles For Sale 45. A list of items for sale.

Painting - Papering 21. An advertisement for painting and papering services.

Floor Finishing 24. An advertisement for floor finishing services.

Bonds - Mortgages 27. An advertisement for bonds and mortgages.

Help Wanted - Male 36. A list of job openings for men.

Help Wanted - Female 37. A list of job openings for women.

Help Wanted - Male 36. A list of job openings for men.

Help Wanted - Female 37. A list of job openings for women.

Articles For Sale 45. A list of items for sale.

HAPPY ADS. A section for various advertisements.

Order Your "Happy Thought" Today! CALL 643-2711. An advertisement for a service.

Happy 1st Anniversary TONY and JAN. An advertisement for an anniversary.

Happy Birthday YVONNE. An advertisement for a birthday.

Happy Birthday MOM, DAD and SIS. An advertisement for a birthday.

Happy Birthday NEA. An advertisement for a birthday.

Happy Birthday GRAMMY MEGHAN. An advertisement for a birthday.

Articles For Sale 45. A list of items for sale.

CLASSIFIED ADVERTISING

CLASSIFIED ADVERTISING DEPT. HOURS 8:30 A.M. to 5:00 P.M. COPY CLOSING TIME FOR CLASSIFIED ADVT. 4:30 P.M. DAY BEFORE PUBLICATION

YOUR COOPERATION WILL BE APPRECIATED DIAL 643-2711

Continued From Preceding Page

Fuel and Feed 49-A Rooms Without Board 59 SEASONED firewood, cut and split to length, dump-truck load, 1/2, half a load, \$15. Call after 5, 643-9004.

Dairy - Farm - 50 BUY your potatoes, direct from the potato warehouse, corner of Buckland Rd. and Tolland Tpke., Buckland. As low as \$1 for 50 pounds, 643-8248.

Household Goods 51 COLOR TV, washing machine, electric stove, 3 bureau, range, refrigerator, security deposit, 643-4731.

REFRIGERATOR, front-free, ice maker, excellent condition, \$200. Three-piece dining room, set, excellent condition, \$175. Other household items. Call 643-9733.

WHALESALERS to you, where we cut the carpets to suit your needs. Visit our warehouse. Open Wednesday through Saturday, 10 to 5 p.m., Sundays 11 to 5 p.m. Carpet Merchants, 1110 Tolland Tpke., Manchester. Phone 646-5553.

CLEAN used refrigerators, ranges, automatic washers with guarantees. See them at B.D. Pearl's Appliances, 649 Main St. Call 643-2171.

JOHN buys and sells used furniture, appliances, 479 Middle Tpke., east. Open 7 days a week. Tuesday, Thursday, Friday, until 9 p.m., 643-5823, 643-7673.

1971 NUCON-Alco sewing machine. Unclaimed by owner, never used, originally \$149.50 now \$69.80, Buttonholer, 425 Main St., Manchester. Excellent condition, 375 or best offer, 643-2146.

FAIR twin sized box springs and mattresses, one single bed frame, Call 644-8004.

Musical Instruments 53 LUDWIG 2 piece down-bow drum set, 23-piece symbol set. Excellent condition, 375 or best offer, 643-2146.

Wanted - To Buy 58 ANTIQUES, dolls, furniture, antique clothing, jewelry, clocks, glassware, household contents, antiques and paintings, 643-2504, 497 Main St., Manchester.

WANTED - antique furniture, glass, pewter, oil paintings or other antique items. Any quantity. The Hartwood, 643-5709, 185 Oakland Street.

HOUSEHOLD items - Antiques, bric-a-brac, clocks, frames, glassware. We buy your household contents, antiques and paintings, 643-2504, 497 Main St., Manchester.

Rooms Without Board 59 DELUXE carpeted, furnished room, private home, 15,000 gentleman or retiree, kitchen privileges, large yard, parking close to shopping. \$225 per month. Robert D. Murdoch, Realtor, 643-2692.

THE THOMPSON House - Cottage St., centrally located, large, pleasant furnished rooms, parking. Call 643-2538 for overnight and permanent guest rates.

MANCHESTER - Furnished rooms, carpeted, kitchen privileges, modern bath, parking with fireplace, privacy, garage, female, 643-0002.

FURNISHED room for female, private home, excellent neighborhood, kitchen privileges, \$10 per week. For information call 643-2692.

Help Wanted - Male 36 MANAGER NEEDED FOR HEALTH AND BEAUTY AID CHAIN. Retail Experience Helpful. Good Fringe Benefits. Apply at: CVS MANSFIELD SHOPPING CENTER

Route 44A, Storrs, Conn. Interviews Wednesday, April 5th 10 a.m. to 4 p.m.

Business Locations 64 MANCHESTER - Warehouse and industrial space, 15,000 square foot units, available immediately. Heat and air-conditioned. Freight elevators. 1 to 1.50 per square foot. 1-748-5634.

PROFESSIONAL office, four-rooms, excellent location, excellent decor all facilities, \$119 monthly. 643-1860, 643-3549.

NEWINGTON - Excellent location. Store approximately 1,000 square feet, next to corner of Berlin Tpke. and East Robbins Rd., across street from the new restaurant. New building, owners - Stockard Investment, Inc., 232-242-0000.

PRIME location, 325 or 650 square feet. Small store or office. Business Zone II. First floor. Ample parking. Will remodel to suit. \$45 per square foot. Inquire 643-1442.

COMMERCIAL place for lease or sale, 461 Main St., next to post office. Excellent business location with building. Call 643-2425, 9-5.

MAIN STREET office, street front, modern restaurant, approximately 1200 sq. ft. Located in business zone II. Ask for price \$20,000. Charles Loperance, 643-7620.

MANCHESTER - Fully equipped, modern restaurant, approximately 1200 sq. ft. Located in business zone II. Ask for price \$20,000. Charles Loperance, 643-7620.

THERE OUGHTA BE A LAW BY SHORTEN and WHIPPLE



Apartment - Flats - 63 MANCHESTER - Royal Arms 2-bedroom townhouse apartment. Fully equipped kitchen, patio with barbecue, central vented location, children welcome, 643-1519, D. J. Henry Co., Realtor.

Apartment - Flats - 63 MANCHESTER - Royal Arms 2-bedroom townhouse apartment. Fully equipped kitchen, patio with barbecue, central vented location, children welcome, 643-1519, D. J. Henry Co., Realtor.

Apartment - Flats - 63 MANCHESTER - Royal Arms 2-bedroom townhouse apartment. Fully equipped kitchen, patio with barbecue, central vented location, children welcome, 643-1519, D. J. Henry Co., Realtor.

Apartment - Flats - 63 MANCHESTER - Royal Arms 2-bedroom townhouse apartment. Fully equipped kitchen, patio with barbecue, central vented location, children welcome, 643-1519, D. J. Henry Co., Realtor.

Apartment - Flats - 63 MANCHESTER - Royal Arms 2-bedroom townhouse apartment. Fully equipped kitchen, patio with barbecue, central vented location, children welcome, 643-1519, D. J. Henry Co., Realtor.

Apartment - Flats - 63 MANCHESTER - Royal Arms 2-bedroom townhouse apartment. Fully equipped kitchen, patio with barbecue, central vented location, children welcome, 643-1519, D. J. Henry Co., Realtor.

Apartment - Flats - 63 MANCHESTER - Royal Arms 2-bedroom townhouse apartment. Fully equipped kitchen, patio with barbecue, central vented location, children welcome, 643-1519, D. J. Henry Co., Realtor.

Apartment - Flats - 63 MANCHESTER - Royal Arms 2-bedroom townhouse apartment. Fully equipped kitchen, patio with barbecue, central vented location, children welcome, 643-1519, D. J. Henry Co., Realtor.

Apartment - Flats - 63 MANCHESTER - Royal Arms 2-bedroom townhouse apartment. Fully equipped kitchen, patio with barbecue, central vented location, children welcome, 643-1519, D. J. Henry Co., Realtor.

Apartment - Flats - 63 MANCHESTER - Royal Arms 2-bedroom townhouse apartment. Fully equipped kitchen, patio with barbecue, central vented location, children welcome, 643-1519, D. J. Henry Co., Realtor.

Apartment - Flats - 63 MANCHESTER - Royal Arms 2-bedroom townhouse apartment. Fully equipped kitchen, patio with barbecue, central vented location, children welcome, 643-1519, D. J. Henry Co., Realtor.

Apartment - Flats - 63 MANCHESTER - Royal Arms 2-bedroom townhouse apartment. Fully equipped kitchen, patio with barbecue, central vented location, children welcome, 643-1519, D. J. Henry Co., Realtor.

Apartment - Flats - 63 MANCHESTER - Royal Arms 2-bedroom townhouse apartment. Fully equipped kitchen, patio with barbecue, central vented location, children welcome, 643-1519, D. J. Henry Co., Realtor.

Apartment - Flats - 63 MANCHESTER - Royal Arms 2-bedroom townhouse apartment. Fully equipped kitchen, patio with barbecue, central vented location, children welcome, 643-1519, D. J. Henry Co., Realtor.

Apartment - Flats - 63 MANCHESTER - Royal Arms 2-bedroom townhouse apartment. Fully equipped kitchen, patio with barbecue, central vented location, children welcome, 643-1519, D. J. Henry Co., Realtor.

Apartment - Flats - 63 MANCHESTER - Royal Arms 2-bedroom townhouse apartment. Fully equipped kitchen, patio with barbecue, central vented location, children welcome, 643-1519, D. J. Henry Co., Realtor.

Apartment - Flats - 63 MANCHESTER - Royal Arms 2-bedroom townhouse apartment. Fully equipped kitchen, patio with barbecue, central vented location, children welcome, 643-1519, D. J. Henry Co., Realtor.

Apartment - Flats - 63 MANCHESTER - Royal Arms 2-bedroom townhouse apartment. Fully equipped kitchen, patio with barbecue, central vented location, children welcome, 643-1519, D. J. Henry Co., Realtor.

Apartment - Flats - 63 MANCHESTER - Royal Arms 2-bedroom townhouse apartment. Fully equipped kitchen, patio with barbecue, central vented location, children welcome, 643-1519, D. J. Henry Co., Realtor.

Apartment - Flats - 63 MANCHESTER - Royal Arms 2-bedroom townhouse apartment. Fully equipped kitchen, patio with barbecue, central vented location, children welcome, 643-1519, D. J. Henry Co., Realtor.

Apartment - Flats - 63 MANCHESTER - Royal Arms 2-bedroom townhouse apartment. Fully equipped kitchen, patio with barbecue, central vented location, children welcome, 643-1519, D. J. Henry Co., Realtor.

Apartment - Flats - 63 MANCHESTER - Royal Arms 2-bedroom townhouse apartment. Fully equipped kitchen, patio with barbecue, central vented location, children welcome, 643-1519, D. J. Henry Co., Realtor.

Apartment - Flats - 63 MANCHESTER - Royal Arms 2-bedroom townhouse apartment. Fully equipped kitchen, patio with barbecue, central vented location, children welcome, 643-1519, D. J. Henry Co., Realtor.

Apartment - Flats - 63 MANCHESTER - Royal Arms 2-bedroom townhouse apartment. Fully equipped kitchen, patio with barbecue, central vented location, children welcome, 643-1519, D. J. Henry Co., Realtor.

Houses For Sale 72 Houses For Sale 72 Houses For Sale 72

MINI ESTATE With 1 1/2 acres of hillside land. A quality built ranch with 5 bedrooms, huge living room with fireplace, formal dining room, laundry room, fireplace, aluminum siding, garage, large wooded lot. Hutchins Agency Realtors, 643-2824.

HERITAGE HOUSE Realtors-MLS 646-2452 For the Finer Homes. MANCHESTER 7-room older home, excellent condition, 4 bedrooms, convenient location, newer kitchen, city utilities. Only \$28,000. Hayes Agency, 646-0121.

MANCHESTER - Seven-room Colonial, 1 1/2 baths, family room, aluminum siding, central location, excellent condition. Garage. Only \$38,000. Hayes Agency, 646-0121.

MANCHESTER - East Center Street, 7-room Colonial, 2 1/2 baths, formal dining room, heated sun room, half bath off kitchen. Three large lots, excellent location. Garage on second floor. Home lot and office potential. \$44,500. Hutchins Agency, Realtors, 643-2824.

MANCHESTER - Seven-room Colonial. New kitchen, two baths, large rooms. Excellent location. \$44,500. Hutchins Agency, Realtors, 643-2824.

ACREAGE - 11-room Colonial large barn, Hutchins Agency Realtors, 643-2824.

MANCHESTER - 5-family, two-story duplex, one 3-room flat, large lot, excellent location. Very clean. R. Harmon Agency, Realtors, 643-2824.

MANCHESTER - Northfield large ranch, 3-bedroom Colonial, 2 1/2 baths, large lot, excellent location. \$44,500. Hutchins Agency, Realtors, 643-2824.

MANCHESTER - Immaculate 3-bedroom ranch with 3 big bedrooms, 2 1/2 baths, full dining room and sunny living room with fireplace. Large kitchen with built-in, 2-car garage. Minutes from downtown. Manchester, Only \$90,000. Call 747-5243.

North Oxford 1972 WEATHER IS COMING Enjoy the 2007 swimming pool. 5-bedroom ranch, 1 1/2 baths, 2-car garage. Minutes from downtown. Manchester, Only \$90,000. Call 747-5243.

VERNON NEW LISTING Lovely 7-room Cape, 3 bedrooms, 1 1/2 baths, garage, living room, formal dining room, garage, rumpus, wood lot.

VERNON NEW LISTING Lovely 7-room Cape, 3 bedrooms, 1 1/2 baths, garage, living room, formal dining room, garage, rumpus, wood lot.

VERNON NEW LISTING Lovely 7-room Cape, 3 bedrooms, 1 1/2 baths, garage, living room, formal dining room, garage, rumpus, wood lot.

VERNON NEW LISTING Lovely 7-room Cape, 3 bedrooms, 1 1/2 baths, garage, living room, formal dining room, garage, rumpus, wood lot.

VERNON NEW LISTING Lovely 7-room Cape, 3 bedrooms, 1 1/2 baths, garage, living room, formal dining room, garage, rumpus, wood lot.

VERNON NEW LISTING Lovely 7-room Cape, 3 bedrooms, 1 1/2 baths, garage, living room, formal dining room, garage, rumpus, wood lot.

VERNON NEW LISTING Lovely 7-room Cape, 3 bedrooms, 1 1/2 baths, garage, living room, formal dining room, garage, rumpus, wood lot.

VERNON NEW LISTING Lovely 7-room Cape, 3 bedrooms, 1 1/2 baths, garage, living room, formal dining room, garage, rumpus, wood lot.

VERNON NEW LISTING Lovely 7-room Cape, 3 bedrooms, 1 1/2 baths, garage, living room, formal dining room, garage, rumpus, wood lot.

VERNON NEW LISTING Lovely 7-room Cape, 3 bedrooms, 1 1/2 baths, garage, living room, formal dining room, garage, rumpus, wood lot.

VERNON NEW LISTING Lovely 7-room Cape, 3 bedrooms, 1 1/2 baths, garage, living room, formal dining room, garage, rumpus, wood lot.

VERNON NEW LISTING Lovely 7-room Cape, 3 bedrooms, 1 1/2 baths, garage, living room, formal dining room, garage, rumpus, wood lot.

VERNON NEW LISTING Lovely 7-room Cape, 3 bedrooms, 1 1/2 baths, garage, living room, formal dining room, garage, rumpus, wood lot.

VERNON NEW LISTING Lovely 7-room Cape, 3 bedrooms, 1 1/2 baths, garage, living room, formal dining room, garage, rumpus, wood lot.

VERNON NEW LISTING Lovely 7-room Cape, 3 bedrooms, 1 1/2 baths, garage, living room, formal dining room, garage, rumpus, wood lot.

VERNON NEW LISTING Lovely 7-room Cape, 3 bedrooms, 1 1/2 baths, garage, living room, formal dining room, garage, rumpus, wood lot.

VERNON NEW LISTING Lovely 7-room Cape, 3 bedrooms, 1 1/2 baths, garage, living room, formal dining room, garage, rumpus, wood lot.

VERNON NEW LISTING Lovely 7-room Cape, 3 bedrooms, 1 1/2 baths, garage, living room, formal dining room, garage, rumpus, wood lot.

Resort Property For Sale 74 Out of Town For Sale 75

1800 VINTAGE 7-room Colonial approx. 1950, on over an acre of land. Trees, guest house and a town, excellent potential, good country atmosphere. All for \$33,900. For more information call Tony Wasi at 643-5006.

MANCHESTER - Seven-room Colonial, 1 1/2 baths, family room, aluminum siding, central location, excellent condition. Garage. Only \$38,000. Hayes Agency, 646-0121.

MANCHESTER - East Center Street, 7-room Colonial, 2 1/2 baths, formal dining room, heated sun room, half bath off kitchen. Three large lots, excellent location. Garage on second floor. Home lot and office potential. \$44,500. Hutchins Agency, Realtors, 643-2824.

MANCHESTER - Seven-room Colonial. New kitchen, two baths, large rooms. Excellent location. \$44,500. Hutchins Agency, Realtors, 643-2824.

ACREAGE - 11-room Colonial large barn, Hutchins Agency Realtors, 643-2824.

MANCHESTER - 5-family, two-story duplex, one 3-room flat, large lot, excellent location. Very clean. R. Harmon Agency, Realtors, 643-2824.

MANCHESTER - Northfield large ranch, 3-bedroom Colonial, 2 1/2 baths, large lot, excellent location. \$44,500. Hutchins Agency, Realtors, 643-2824.

MANCHESTER - Immaculate 3-bedroom ranch with 3 big bedrooms, 2 1/2 baths, full dining room and sunny living room with fireplace. Large kitchen with built-in, 2-car garage. Minutes from downtown. Manchester, Only \$90,000. Call 747-5243.

North Oxford 1972 WEATHER IS COMING Enjoy the 2007 swimming pool. 5-bedroom ranch, 1 1/2 baths, 2-car garage. Minutes from downtown. Manchester, Only \$90,000. Call 747-5243.

VERNON NEW LISTING Lovely 7-room Cape, 3 bedrooms, 1 1/2 baths, garage, living room, formal dining room, garage, rumpus, wood lot.

VERNON NEW LISTING Lovely 7-room Cape, 3 bedrooms, 1 1/2 baths, garage, living room, formal dining room, garage, rumpus, wood lot.

VERNON NEW LISTING Lovely 7-room Cape, 3 bedrooms, 1 1/2 baths, garage, living room, formal dining room, garage, rumpus, wood lot.

VERNON NEW LISTING Lovely 7-room Cape, 3 bedrooms, 1 1/2 baths, garage, living room, formal dining room, garage, rumpus, wood lot.

VERNON NEW LISTING Lovely 7-room Cape, 3 bedrooms, 1 1/2 baths, garage, living room, formal dining room, garage, rumpus, wood lot.

VERNON NEW LISTING Lovely 7-room Cape, 3 bedrooms, 1 1/2 baths, garage, living room, formal dining room, garage, rumpus, wood lot.

VERNON NEW LISTING Lovely 7-room Cape, 3 bedrooms, 1 1/2 baths, garage, living room, formal dining room, garage, rumpus, wood lot.

VERNON NEW LISTING Lovely 7-room Cape, 3 bedrooms, 1 1/2 baths, garage, living room, formal dining room, garage, rumpus, wood lot.

VERNON NEW LISTING Lovely 7-room Cape, 3 bedrooms, 1 1/2 baths, garage, living room, formal dining room, garage, rumpus, wood lot.

VERNON NEW LISTING Lovely 7-room Cape, 3 bedrooms, 1 1/2 baths, garage, living room, formal dining room, garage, rumpus, wood lot.

VERNON NEW LISTING Lovely 7-room Cape, 3 bedrooms, 1 1/2 baths, garage, living room, formal dining room, garage, rumpus, wood lot.

VERNON NEW LISTING Lovely 7-room Cape, 3 bedrooms, 1 1/2 baths, garage, living room, formal dining room, garage, rumpus, wood lot.

VERNON NEW LISTING Lovely 7-room Cape, 3 bedrooms, 1 1/2 baths, garage, living room, formal dining room, garage, rumpus, wood lot.

VERNON NEW LISTING Lovely 7-room Cape, 3 bedrooms, 1 1/2 baths, garage, living room, formal dining room, garage, rumpus, wood lot.

VERNON NEW LISTING Lovely 7-room Cape, 3 bedrooms, 1 1/2 baths, garage, living room, formal dining room, garage, rumpus, wood lot.

VERNON NEW LISTING Lovely 7-room Cape, 3 bedrooms, 1 1/2 baths, garage, living room, formal dining room, garage, rumpus, wood lot.

VERNON NEW LISTING Lovely 7-room Cape, 3 bedrooms, 1 1/2 baths, garage, living room, formal dining room, garage, rumpus, wood lot.

VERNON NEW LISTING Lovely 7-room Cape, 3 bedrooms, 1 1/2 baths, garage, living room, formal dining room, garage, rumpus, wood lot.

VERNON NEW LISTING Lovely 7-room Cape, 3 bedrooms, 1 1/2 baths, garage, living room, formal dining room, garage, rumpus, wood lot.

Wanted - Real Estate 77

ALL CALL for your property with a house. Avoid realtors, instant service. Hayes Agency, 646-0121.

MANCHESTER - Seven-room Colonial, 1 1/2 baths, family room, aluminum siding, central location, excellent condition. Garage. Only \$38,000. Hayes Agency, 646-0121.

MANCHESTER - East Center Street, 7-room Colonial, 2 1/2 baths, formal dining room, heated sun room, half bath off kitchen. Three large lots, excellent location. Garage on second floor. Home lot and office potential. \$44,500. Hutchins Agency, Realtors, 643-2824.

MANCHESTER - Seven-room Colonial. New kitchen, two baths, large rooms. Excellent location. \$44,500. Hutchins Agency, Realtors, 643-2824.

ACREAGE - 11-room Colonial large barn, Hutchins Agency Realtors, 643-2824.

MANCHESTER - 5-family, two-story duplex, one 3-room flat, large lot, excellent location. Very clean. R. Harmon Agency, Realtors, 643-2824.

MANCHESTER - Northfield large ranch, 3-bedroom Colonial, 2 1/2 baths, large lot, excellent location. \$44,500. Hutchins Agency, Realtors, 643-2824.

MANCHESTER - Immaculate 3-bedroom ranch with 3 big bedrooms, 2 1/2 baths, full dining room and sunny living room with fireplace. Large kitchen with built-in, 2-car garage. Minutes from downtown. Manchester, Only \$90,000. Call 747-5243.

North Oxford 1972 WEATHER IS COMING Enjoy the 2007 swimming pool. 5-bedroom ranch, 1 1/2 baths, 2-car garage. Minutes from downtown. Manchester, Only \$90,000. Call 747-5243.

VERNON NEW LISTING Lovely 7-room Cape, 3 bedrooms, 1 1/2 baths, garage, living room, formal dining room, garage, rumpus, wood lot.

VERNON NEW LISTING Lovely 7-room Cape, 3 bedrooms, 1 1/2 baths, garage, living room, formal dining room, garage, rumpus, wood lot.

VERNON NEW LISTING Lovely 7-room Cape, 3 bedrooms, 1 1/2 baths, garage, living room, formal dining room, garage, rumpus, wood lot.

VERNON NEW LISTING Lovely 7-room Cape, 3 bedrooms, 1 1/2 baths, garage, living room, formal dining room, garage, rumpus, wood lot.

VERNON NEW LISTING Lovely 7-room Cape, 3 bedrooms, 1 1/2 baths, garage, living room, formal dining room, garage, rumpus, wood lot.

VERNON NEW LISTING Lovely 7-room Cape, 3 bedrooms, 1 1/2 baths, garage, living room, formal dining room, garage, rumpus, wood lot.

VERNON NEW LISTING Lovely 7-room Cape, 3 bedrooms, 1 1/2 baths, garage, living room, formal dining room, garage, rumpus, wood lot.

VERNON NEW LISTING Lovely 7-room Cape, 3 bedrooms, 1 1/2 baths, garage, living room, formal dining room, garage, rumpus, wood lot.

VERNON NEW LISTING Lovely 7-room Cape, 3 bedrooms, 1 1/2 baths, garage, living room, formal dining room, garage, rumpus, wood lot.

VERNON NEW LISTING Lovely 7-room Cape, 3 bedrooms, 1 1/2 baths, garage, living room, formal dining room, garage, rumpus, wood lot.

VERNON NEW LISTING Lovely 7-room Cape, 3 bedrooms, 1 1/2 baths, garage, living room, formal dining room, garage, rumpus, wood lot.

VERNON NEW LISTING Lovely 7-room Cape, 3 bedrooms, 1 1/2 baths, garage, living room, formal dining room, garage, rumpus, wood lot.

VERNON NEW LISTING Lovely 7-room Cape, 3 bedrooms, 1 1/2 baths, garage, living room, formal dining room, garage, rumpus, wood lot.

VERNON NEW LISTING Lovely 7-room Cape, 3 bedrooms, 1 1/2 baths, garage, living room, formal dining room, garage, rumpus, wood lot.

VERNON NEW LISTING Lovely 7-room Cape, 3 bedrooms, 1 1/2 baths, garage, living room, formal dining room, garage, rumpus, wood lot.

VERNON NEW LISTING Lovely 7-room Cape, 3 bedrooms, 1 1/2 baths, garage, living room, formal dining room, garage, rumpus, wood lot.

VERNON NEW LISTING Lovely 7-room Cape, 3 bedrooms, 1 1/2 baths, garage, living room, formal dining room, garage, rumpus, wood lot.

VERNON NEW LISTING Lovely 7-room Cape, 3 bedrooms, 1 1/2 baths, garage, living room, formal dining room, garage, rumpus, wood lot.

VERNON NEW LISTING Lovely 7-room Cape, 3 bedrooms, 1 1/2 baths, garage, living room, formal dining room, garage, rumpus, wood lot.

STAR GAZER

STAR GAZER Your Daily Astrology Guide According to the Stars. To develop message for Tuesday, read words corresponding to numbers of your Zodiac.

MANCHESTER - Seven-room Colonial, 1 1/2 baths, family room, aluminum siding, central location, excellent condition. Garage. Only \$38,000. Hayes Agency, 646-0121.

MANCHESTER - East Center Street, 7-room Colonial, 2 1/2 baths, formal dining room, heated sun room, half bath off kitchen. Three large lots, excellent location. Garage on second floor. Home lot and office potential. \$44,500. Hutchins Agency, Realtors, 643-2824.

MANCHESTER - Seven-room Colonial. New kitchen, two baths, large rooms. Excellent location. \$44,500. Hutchins Agency, Realtors, 643-2824.

ACREAGE - 11-room Colonial large barn, Hutchins Agency Realtors, 643-2824.

MANCHESTER - 5-family, two-story duplex, one 3-room flat, large lot, excellent location. Very clean. R. Harmon Agency, Realtors, 643-2824.

MANCHESTER - Northfield large ranch, 3-bedroom Colonial, 2 1/2 baths, large lot, excellent location. \$44,500. Hutchins Agency, Realtors, 643-2824.

MANCHESTER - Immaculate 3-bedroom ranch with 3 big bedrooms, 2 1/2 baths, full dining room and sunny living room with fireplace. Large kitchen with built-in, 2-car garage. Minutes from downtown. Manchester, Only \$90,000. Call 747-5243.

North Oxford 1972 WEATHER IS COMING Enjoy the 2007 swimming pool. 5-bedroom ranch, 1 1/2 baths, 2-car garage. Minutes from downtown. Manchester, Only \$90,000. Call 747-5243.

Winners Listed In Science Fair

More than 400 parents and friends of students at Bolton Elementary School attended last week's science fair...

About Town

Stanley Circle of South United Methodist Church will meet tomorrow at 7:45 p.m. at the home of Mrs. Donald Calver...

Police Appointees

Jerry Chermak of North Rd. has been named a director of the Interstate Police Officers Association...

Rehearsal of the Children's Choir

Rehearsals of the Children's Choir have been canceled for tonight at 8 at the home of Mrs. Donald Nielsen...

Rehearsal of the Children's Choir

Rehearsals of the Children's Choir have been canceled for tonight at 8 at the home of Mrs. Donald Nielsen...

Rehearsal of the Children's Choir

Rehearsals of the Children's Choir have been canceled for tonight at 8 at the home of Mrs. Donald Nielsen...

Rehearsal of the Children's Choir

Rehearsals of the Children's Choir have been canceled for tonight at 8 at the home of Mrs. Donald Nielsen...

Rehearsal of the Children's Choir

Rehearsals of the Children's Choir have been canceled for tonight at 8 at the home of Mrs. Donald Nielsen...

Page 10

Clearing, windy, colder tonight; low 25 to 30. Tomorrow sunny and cool; high near 40. Outlook for Thursday... fair and cold.

Comments Quiet On Weiss Budget

BY GLENN GAMBER (Herald Reporter) In spite of the standing-room-only crowd at Waddell School, it was a unusually quiet and orderly hearing last night on Town Manager Robert Weiss's recommended \$17,184,528 budget...



Townspople jam Waddell School auditorium last night to voice opinion on town manager's budget. (Herald photo by Buevicivius)

School Spending

There was specific support of the \$11,000 in the recommended budget for Crossroads, the town's drug advisory center; and the \$2,500 recommended to subsidize the Manchester Home-maker Service.

Susan Pendleton Dead, Veteran Hebron Writer

By CLEMENCELL YOUNG (Herald Correspondent) Miss Susan Bingham Pendleton, poet and Hebron correspondent for The Manchester Evening Herald for 40 years, died last night in the Natchaug Nursing Home in Mansfield. Had she lived to May 1, she would have been 102 years old.



Susan Pendleton

More Bases Lost; Red Tide Stemmed

SAIGON (AP) — South Vietnamese forces lost two more bases in their northernmost province today as U.S. air and naval forces hit the invading North Vietnamese. The South Vietnamese commander in the north said the enemy invasion across the demilitarized zone had been stopped after five days.

Board Won't Sign Tolland Grand List

BY BETTE QUATRALE (Herald Correspondent) The Board of Tax Review has refused to sign the revalued \$48,750,330 grand list, authorized by the Board of Assessors, citing inequities involving both land and home assessments which board members feel cannot be resolved.

U.S. Air Arm Batters Form

sources that government troops had made an amphibious landing at the Chu Viet estuary, which is also miles northeast of the main enemy invasion force at Dong Ha. The reports apparently resulted from misreading of an operational plan not yet put into effect.

Revamp Map Returned To The Assembly

HARTFORD (AP) — Legislative leaders decided today to tackle the reapportionment problem again, rather than leave the job in the hands of a special "master" and the federal courts. A resolution reappointing last year's eight-member bipartisan Reapportionment Commission was being prepared for approval later in the day by both the House and the Senate.

Here's A Great Recipe For Saving!

Royal Vienna Cookware advertisement featuring images of various cookware items like skillets, saucapans, and Dutch ovens.

Savings Bank of Manchester advertisement with details on interest rates (5%, 5 1/4%, 5 3/4%, 6%) and account types.

Advertisement for a new savings account with a list of names and their comments, such as 'FATHER SHOWS no tax increase "madness!"' and 'GLENN COOPER "give us a good education!"'